

**VILLAGE OF DOWNERS GROVE**  
**REPORT FOR THE VILLAGE COUNCIL WORKSHOP**  
**JUNE 9, 2009 AGENDA**

SUBJECT:	TYPE:	SUBMITTED BY:
Parking Modifications for Whittier School – Hill Street and Blodgett Avenue	✓ Resolution Ordinance Motion Discussion Only	Naneil Newlon, P.E. Director of Public Works

**SYNOPSIS**

An ordinance has been prepared to amend sections of the Municipal Code concerning parking on both sides of Blodgett Avenue, and on the north side of Hill Street, in the vicinity of Whittier School.

**STRATEGIC PLAN ALIGNMENT**

The Five Year Plan and Goals for 2008-2013 identified *Exceptional Municipal Organization*. A supporting objective of this goal is *Top Quality Village Infrastructure and Facilities*.

**FISCAL IMPACT**

N/A

**RECOMMENDATION**

Approval on the June 16, 2009, consent agenda

**BACKGROUND**

This item was brought forward by representatives at Whittier School and School District 58. The lack of proper on-street parking and the unofficial pick-up area designations have been causing safety issues on both Hill Street and Blodgett Avenue. Staff has met with the Whittier School principal on a couple of occasions to obtain more information about the safety and parking issues at the school. Staff has also observed the parking operation on both Hill Street and Blodgett Avenue.

There is a shortage of on-street parking in the immediate vicinity of the school. Parking spaces are available further away toward Randall and Summit Streets. Motorists who arrive earlier find parking spaces close to the school; however, the later arrivals often double- and triple-park, causing access and circulation problems. Staff believes the current arrangement is unsafe and can be improved for both the area residents and the motorists who transport and pick up children at Whittier School. Staff proposes the following:

- **Blodgett Avenue** - Staff proposes an alternating no-parking design for Blodgett which would solve both the roadway access and safety issues around the school. North of Hill Street, parking should be permitted along the east side of the school property. On the west side, staff proposes a “No Parking 8-9 AM and 2-3 PM” extending from north of Hill Street to Randall Street.
- **Hill Street** - Staff proposes a 100 foot designated drop-off/pick-up area in front of the school entrance on Hill Street. A “No Parking 8-9 AM and 2-3 PM” designation is proposed to formalize the drop-off area. Proper “School Drop-Off/Pick-Up” signage would be installed to better communicate this change to motorists. Also, the drop-off area would be cross-hatched and on-street parking spaces would be painted.

With these proposed changes, along with education of parents at the beginning of the school year, staff believes the Whittier school drop-off operation will be enhanced on Hill Street; that motorists will have adequate place to park on Blodgett Avenue; and sight distance will be improved for motorists heading south from Hill Street.

These items were presented at the May 20, 2009 Transportation and Parking Commission meeting. The Commission voted unanimously to approve staff's proposed parking modifications.

**ATTACHMENTS**

Meeting Minutes – TAP Commission meeting May 20, 2009

Exhibit

Ordinance

Whittier School Parking

ORDINANCE NO. \_\_\_\_\_

**AN ORDINANCE AMENDING PARKING RESTRICTIONS ON  
BLODGETT AVENUE AND HILL STREET**

BE IT ORDAINED by the Village Council of the Village of Downers Grove in DuPage County, Illinois, as follows: (Additions are indicated by **shading/underline**; deletions by ~~strikeout~~):

**Section 1. That Section 14.104.04. is hereby amended to read as follows:**

**14.104.04. Same--Between 8:00 A.M. and 9:00 A.M., 2:00 P.M. and 3:00 P.M. on school days.**

No person shall stop or let stand any automobile, motor vehicle or other vehicle, between the hours of 8:00 A.M. and 9:00 A.M. or between the hours of 2:00 P.M. and 3:00 P.M. on any school day in the following locations:

Blodgett Avenue, on the east side, from the south edge of Hill Street and one hundred twenty (120) feet south of Hill Street.

Blodgett Avenue, on the west side, from the north edge of Hill Street to Randall Street.

Hill Street, on the north side, from approximately three hundred (300) feet east of Blodgett Avenue to a point four hundred (400) feet east of Blodgett Avenue.

Hillcrest Road, on the west side, from the north edge of Jefferson Avenue to a point one hundred thirty (130) feet north of Jefferson Avenue.

Indianapolis Avenue, on the north side, from a point fifty (50) feet west of Florence Avenue to a point one hundred fifty (150) feet west of Florence Avenue.

Lincoln Avenue, on the north side, from a point four hundred fifty (450) feet west of Cumnor Road to a point five hundred fifty (550) feet west of Cumnor Road; and on the south side, from a point five hundred (500) feet east of Fairview Avenue to a point seven hundred fifty (750) feet east of Fairview Avenue.

Stonewall Avenue, on the west side, from a point four hundred forty-one (441) feet north of 63rd Street to a point five hundred thirty (530) feet north of 63rd Street, and from a point seventy-five (75) feet north of the south side of 62nd Street extended to a point seventy-five (75) feet south of the south side of 62nd Street extended. (Ord. No. 3082, § 3.)

**Section 2.** That all ordinances or parts of ordinances in conflict with the provisions of this ordinance are hereby repealed.

**Section 3.** That this ordinance shall be in full force and effect from and after its passage and publication in the manner provided by law.

\_\_\_\_\_  
Mayor

Passed:  
Published:  
Attest: \_\_\_\_\_  
Village Clerk

# TRANSPORTATION AND PARKING COMMISSION

## MAY 20, 2009

### MEETING MINUTES

**File #08-09 Whittier School Hill St and Blodgett Ave Parking Modifications** – Mr. Fera presented a summary of the issues regarding the parking and safety concerns brought forward by Whittier School and District 58.

In response to a Commission question, Mr. Fera further explained the drop-off issue in front of the school. Currently, there is no official Village signage and no ordinance support for the drop-off operation. Motorists have up until now, been cooperating on a voluntary basis. In response to the Whittier School, many motorists are blocking and parking in the drop-off area, and staff would like to make this drop-off operation official and enforceable to maintain safety on the street.

Ms. Linda Welch, Whittier School Principal, commented that there are only 26 teacher parking spaces in their west lot. However, those spaces are not always sufficient for the school's needs, so teachers often park on Hill Street and Blodgett Avenue. In addition, on Wednesdays, which is garbage pick-up day, the parking situation is further exacerbated in the AM due to the garbage trucks.

In response to a question, Ms. Lorie Pilster, Director of Business Services for District 58 stated that District 58 had discussed parking expansion at Whittier School. But, due to budgetary constraints, and other infrastructure projects, there are no funds available in 2009.

Ms. Linda Welch stated that Whittier has increased its student base; there are now about 300 students attending. Whittier School has no busing service.

Co-Chair Gress stated that the Village should change the garbage pick-up time to be later in the morning on Blodgett Avenue to avoid parking conflicts with the school.

In response to a Commission question, Mr. Millette stated that overflow parking will likely need to use Blodgett Avenue further north, and south of Hill Street. Also, parking on Grand Avenue will also likely see an increase of a few cars.

Ms. Terri Williams, stated that on Blodgett Avenue, not just garbage trucks, but ambulances are impeded when cars park on both sides of the street.

Ms. Beverly Nykiel, 5244 Blodgett, stated that she has lived at the corner of Blodgett and Hill for over 15 years. She would favor the parking restrictions proposed.

Mr. Tom Nybo, 5253 Blodgett, stated that speeding traffic is also a problem. Staff responded to his question about the definition of "parking". He also stated that the School District should encourage more walking, to reduce the number of cars present on the street.

Mr. Paul Simms, 5210 Blodgett, commented that enforcement by the Police Department is needed. All the signage will not have any effect unless enforced.

A comment was made to request the Police Department to enforce the signage during the first week that it is installed.

Ms. Linda Welch, stated that the District 58 Newsletter will have the parking changes for the upcoming school year in the fall.

In response to a Commission question, staff will monitor the parking usage on Grand Avenue

Ms. Terri Williams inquired about placing a STOP sign on Blodgett Avenue at Hill. In response, Mr. Millette stated that staff will take a look to see if it would be warranted.

In response to a question, Mr. Millette stated that deployment of the traffic calming speed cushions is coming very soon. Staff is trying to schedule the workers to do this work.

Mr. Millette stated in response to a question that this item would likely be presented to Village Council at their June 12, 2009 workshop.

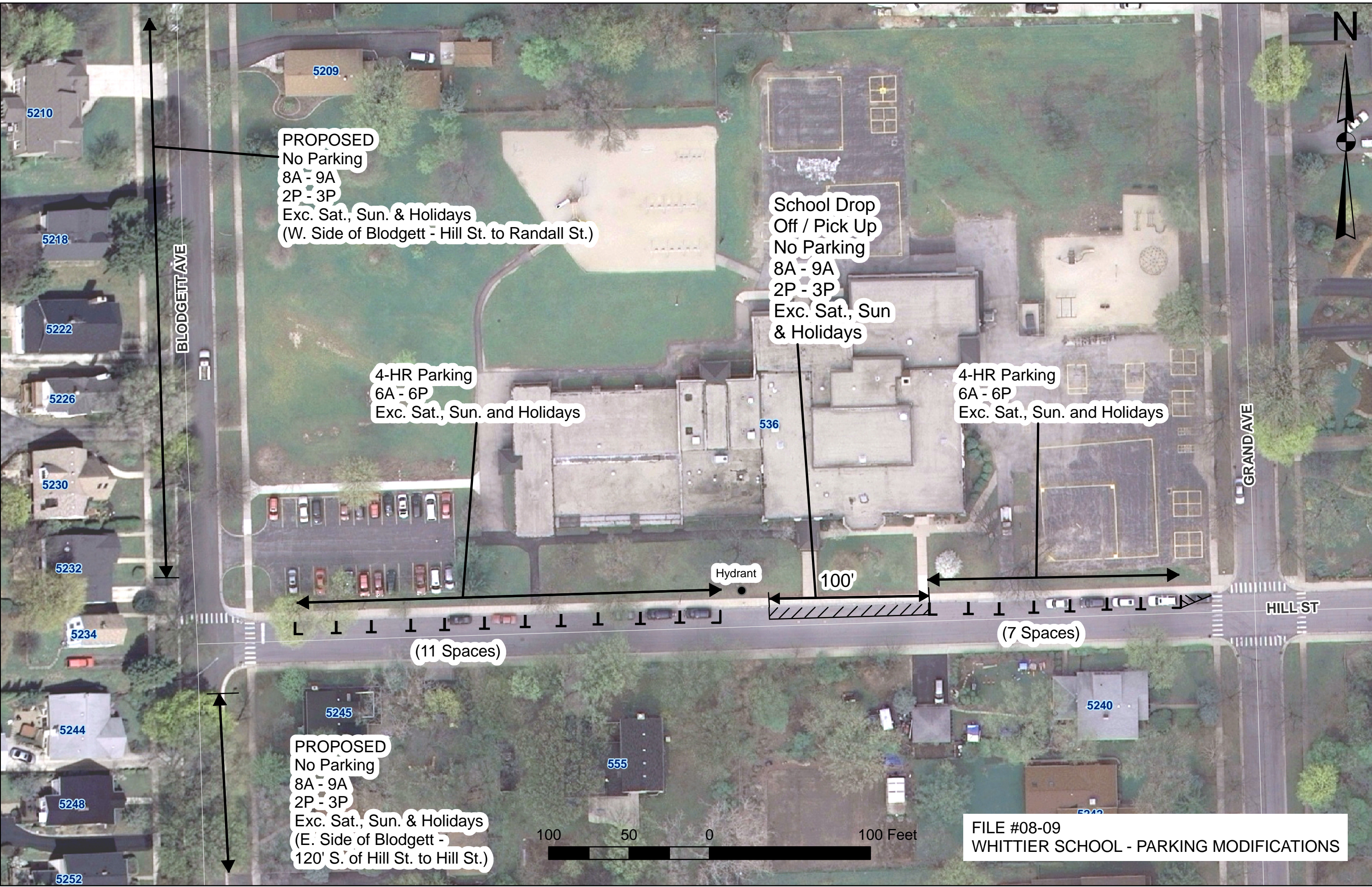
**MR. SCHILLER MADE A MOTION TO APPROVE THE PROPOSED PARKING MODIFICATIONS ON BOTH HILL STREET AND BLODGETT AVENUE, AND ALSO ADDED "WITH PROPER SCHOOL DROP-OFF SIGNAGE INSTALLED. "**

**SECONDED BY MR. STUEBNER. ROLL CALL:**

**AYE: MR. SARICKS, MR. SCHILLER, MR. GRESS, MR. WENDT, MR. STUEBNER, MR. CRONIN, MS. VAN ANNE**

**NAY: NONE**

**MOTION CARRIED. VOTE: 7-0**



**PROPOSED**  
No Parking  
8A - 9A  
2P - 3P  
Exc. Sat., Sun. & Holidays  
(W. Side of Blodgett - Hill St. to Randall St.)

School Drop  
Off / Pick Up  
No Parking  
8A - 9A  
2P - 3P  
Exc. Sat., Sun  
& Holidays

4-HR Parking  
6A - 6P  
Exc. Sat., Sun. and Holidays

4-HR Parking  
6A - 6P  
Exc. Sat., Sun. and Holidays

BLODGETT AVE

GRAND AVE

HILL ST

Hydrant

100'

(11 Spaces)

(7 Spaces)

**PROPOSED**  
No Parking  
8A - 9A  
2P - 3P  
Exc. Sat., Sun. & Holidays  
(E. Side of Blodgett -  
120' S. of Hill St. to Hill St.)

100 50 0 100 Feet

FILE #08-09  
WHITTIER SCHOOL - PARKING MODIFICATIONS

5210

5209

5218

5222

5226

5230

5232

5234

5244

5248

5252

5245

555

536

5240

5242