



**MANAGER'S REPORT FOR OCTOBER 11, 2013**  
**GENERAL INFORMATION AND RESPONSES TO MAYOR & COMMISSIONER REQUESTS**

***Places to be this Week...***

**Silent Parade** - The Silent Parade honoring fallen firefighters will be held on **Friday, October 11**. The parade begins in Hinsdale at 7 p.m. and finishes at Trinity Lutheran Church, 1101 Kimberly Way (two blocks south of Route 53 and Maple Avenue) in Lisle at 7:45 p.m.

**Village Council Meeting** - The next Village Council meeting will be held on **Tuesday, October 15, 2013 at 7 p.m.** in the Council Chambers at Village Hall.

***Future Calendar Reminders...***

**Coffee with the Council** - Coffee with the Council will be held on Saturday, October 19 at Fire Station 2.

**City of Chicago Mid-Year Report to DuPage Water Commission** - Attached is the report from the City of Chicago to the DuPage Water Commission.

**Resident Question Regarding Downtown Recycling** - At the 10/8/13 Village Council meeting, a resident asked for an update on the status of recycling in the Village's downtown business district. This topic was discussed during the most recent contract renewal process in 2010. At that time, pricing for adding downtown recycling collection services to the existing contracted services for refuse collection was obtained from Republic Services at approximately \$31,000 to \$36,000 per year. See the following link (page 5) [www.downers.us/public/docs/top\\_stories/Solid\\_Waste\\_and\\_Disposal\\_Services\\_Contract.pdf](http://www.downers.us/public/docs/top_stories/Solid_Waste_and_Disposal_Services_Contract.pdf). These costs do not include the purchase of recycling containers and signage, along with staff time, that would be necessary to make the program operate effectively.

At the time, the Village opted not to pursue downtown recycling collection services. Approximately one year before the current contract expires in March of 2016, staff will begin identifying options and engaging the Council regarding contract renewal preferences and service delivery objectives. Staff anticipates that incorporation of downtown recycling would be a primary consideration during these planning efforts.

**Recycling Extravaganza Final Report** - The 2013 Recycling Extravaganza took place on September 28. More than one-thousand residents of DuPage County were able to conveniently dispose of their recycling at a single location, the Village Public Works facility at 5101 Walnut Avenue. The list below reflects the totals for the various categories of items collected as reported by the company or non-for-profit organization that has assumed responsibility for their safe recycling or disposal:

Carpet - 12-14,000 lbs (melted down for plastic) – *Go Green Recycling*  
Paper - 7980 lbs - (all shredded off-site on Saturday) – *Cutting Edge*  
Ink Jet Cartridges – 895 - *Scarce*  
Cell Phones - 189 - *Scarce*

Glasses - 140 – *Lions Club*

Electronics - 59,038 lbs – *Creative Recycling*

Flags – 105 – *VFW 503*

Bikes – 80 – *Working Bikes*

Fire Extinguishers – 74 - *Cintas*

Propane Tanks – 52 - *Amerigas*

Batteries - 4,500 lbs – *Interstate Batteries*

Textiles, furniture, appliances - 3,940 lbs. - *Goodwill*

Home-building materials and tools - 2,000 lbs. – *Habitat for Humanity Restore*

Total - More than 92,000 lbs. diverted from landfills

## **ATTACHMENTS**

Report from City of Chicago



**DEPARTMENT OF WATER MANAGEMENT  
CITY OF CHICAGO**

Mr. James Zay  
Chairman  
Dupage Water Commission  
600 East Butterfield Road  
Elmhurst, Illinois 60126

Re: 2013 Mid-Year Suburban Report

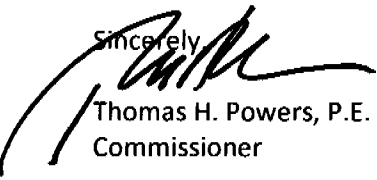
Dear Mr. Zay:

I am pleased to enclose the City of Chicago Department of Water Management's 2013 Mid-year Suburban Report and proud to state we are on track to meet this year's goals. When we embarked on this 10-year Capital Program we set high annual targets for our Department. Mid-way through our second year we are on track to meet and exceed the goals for 2013 because of the work provided by the men and women of the Department of Water Management. We are doing things smarter, more efficiently and effectively and with satisfaction for work well-done. The work that is performed on a daily basis at the Department of Water Management could not be completed without the support of our customers, such as you.

Further, we are positioning the Department to be ready to face water challenges including population growth, climate change and new water quality standards. Our Capital Improvement Plan for infrastructure renewal and facility improvements takes a holistic and integrated approach that includes water and energy conservation, security reviews and inter-department and inter-agency planning and cooperation. As the region's population is expected to increase significantly by 2050 it is imperative that the Chicago Water System be optimally operating both from the treatment and distribution perspectives that incorporate the best practices of construction, science and engineering. The Department's Capital Improvement Program is on track to conserve enough water to provide for an additional 700,000 people without major capacity build-outs at our facilities. Failure to take these measures would result in a less reliable system that will not meet the future needs of our regional customer base; a continual, reliable and quality supply of water.

The Chicago Water System provides redundancy, reliability and resources. There is redundancy in the system to reduce and avoid water service interruptions. The Chicago Water System provides high-quality, good tasting and reliable water 24 hours a day, 7 days a week and 365 days a year. The Department has the resources to address the needs of the Water System in a timely manner. I am pleased to provide you with the attached 2013 Mid-Year Suburban Report. In this report you will see that we will meet our targets for our Capital Improvement Program.

Sincerely,

  
Thomas H. Powers, P.E.  
Commissioner

cc: Rahm Emanuel, Mayor

CITY OF CHICAGO  
DEPARTMENT OF WATER MANAGEMENT



# 2013 MID-YEAR REPORT TO SUBURBAN CUSTOMERS

---

RAHM EMANUEL, MAYOR



THOMAS H. POWERS, P.E., COMMISSIONER  
1000 E. OHIO STREET  
CHICAGO, IL 60611



# DEPARTMENT OF WATER MANAGEMENT

## *2013 Mid-Year Report to Suburban Customers*

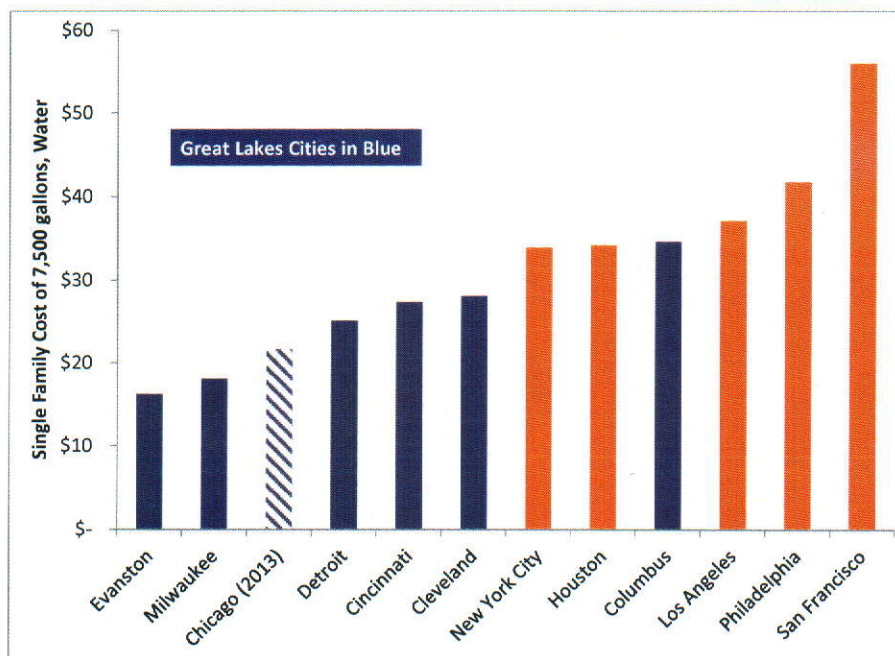
### *Executive Summary*

In 2011, the City of Chicago Department of Water Management in the words of Daniel Burnham made “no small plans.” Meeting our responsibility to provide quality drinking water to our customers, the citizens of Chicago and our suburban customers throughout the region in a sustainable, efficient and effective manner, we developed a 10-year capital program to improve the Chicago Water System with a goal of maintaining our current capacity levels and supplying the finest and most reliable supply of water to our customers. To meet the goals of this program, and as part of the 2012 Budget, Chicago City Council passed a 4-year water rate increase. In 2013, the water rate increased 15% to \$2.88 per 1,000 gallons of water. Even with this rate increase, Chicago still enjoys one of the lowest rates in the nation and is able to meet its 10-year goals. In 2013 the Department of Water Management, under the Mayor’s leadership will continue with its capital improvement program, hereinafter referred to the Mayor’s 2013 Infrastructure Capital Program. This program includes 75 miles of water main replacement, replacing the 10-acre roof at the Jardine Water Purification Plant, converting the Springfield Avenue Pumping Station from steam to electric power and replacing aging equipment at the Roseland and Southwest Pumping Stations. In addition the Department is installing **12,000** meters as part of the MeterSave Program.

Through the Second Quarter of 2013, the Department is meeting or exceeding its metrics as set out in the Mayor’s 2013 Infrastructure Capital Program. This plan will be accomplished to maintain and improve reliability and ensure a quality, sufficient water supply for the expected population growth to the region.

The Department is pleased to offer this report as a summation of work completed in the Second Quarter of 2013.

### Water Rates as of March 2013



Thomas H. Powers, P.E., Commissioner

# DEPARTMENT OF WATER MANAGEMENT

---

## 2013 MID-YEAR REPORT TO SUBURBAN CUSTOMERS

---

### Table of Contents

The Department of Water Management (the Department or DWM) is pleased to provide this 2013 Mid-Year Report highlighting accomplishments within DWM. This report will provide a summary of our progress for January 1 – June 30, 2013 in the following areas:

Executive Summary .....	2
Table of Contents .....	4
Introduction .....	5
Construction .....	6
Facilities .....	7
Conservation Programs .....	9
Water Billing & Collections.....	11
Summary .....	11

Please Note: DWM relies on data through June 30, 2013. The financial data is based upon raw data and has not been audited.



## 2012 YEAR END REPORT TO SUBURBAN CUSTOMERS

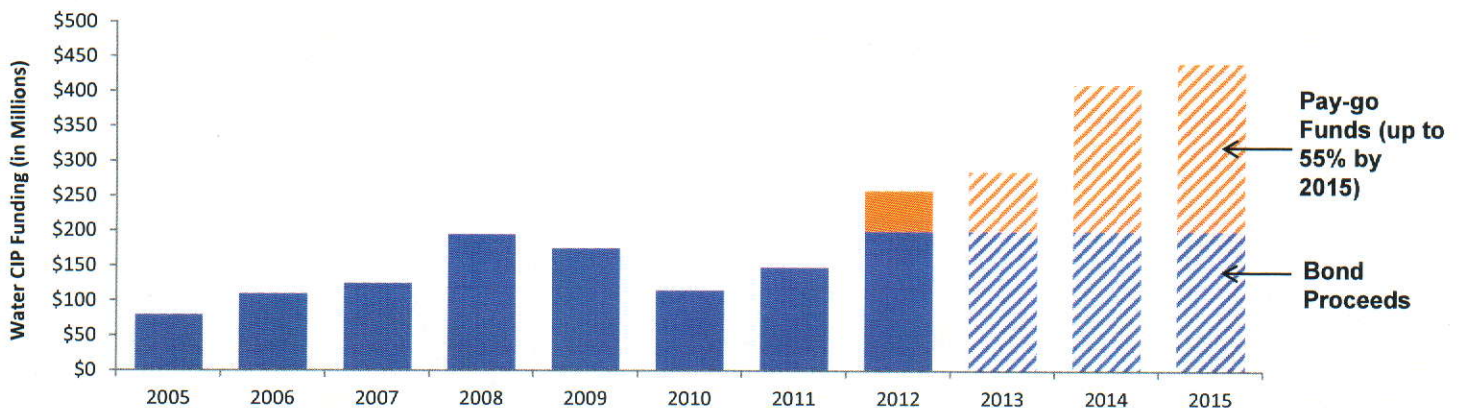
### INTRODUCTION

#### *Introduction*

As part of the 2012 Budget, City Council passed a four-year rate increase; 25% in 2012 and 15% in 2013, 2014 and 2015. As a result, the Department of Water Management, under the Mayor's leadership has undertaken a much needed and overdue capital improvement program, hereinafter referred to the Mayor's Infrastructure Capital Program. In 2013, the Department is on track to replaced 75 miles of water main, continue the conversion from steam to electric of the Springfield Pumping Station, continue to replace the 10 acre east roof at the Jardine Water Purification Plant and install 12,000 meters as part of its MeterSave Program.

The major goal of the Department of Water Management is to provide water service for the current population and an **additional 700,000 people in the region, most of which is expected our suburban customer base, within the next decade** without having to make major capital improvements to increase capacity at our treatment plants or pumping stations. We will do this through upgrades and improvements that provide a more sustainable, efficient and robust Water System. Further, we will ensure a fresh water supply for future generations without adding financial burdens. Good stewardship and sound fiscal management have led to lower borrowing costs thereby increasing the amount of work to be completed for the same money. In addition, with the rate increases the Department has begun paying for a portion of the capital projects with revenues collected annually.

#### Projected Water Capital Improvement Plan Spending



This Mid-Year End Report is provided as a status report of the efforts the Department is undertaking and the progress made through June 30, 2013. Specifically, the Department will be issuing a 400 million dollar bond for capital projects in early 2014 to cover 2014-2016. Further, in 2013 we are on track to obtain 47 million dollars in Illinois EPA State Revolving Loan Funds to be used toward water main installations and 15 million dollars for the Department's MeterSave Program. As you will see by this report, the Department is pleased to state that it is on track to meet its 2013 goals and is on track with its 10-year Capital Program.

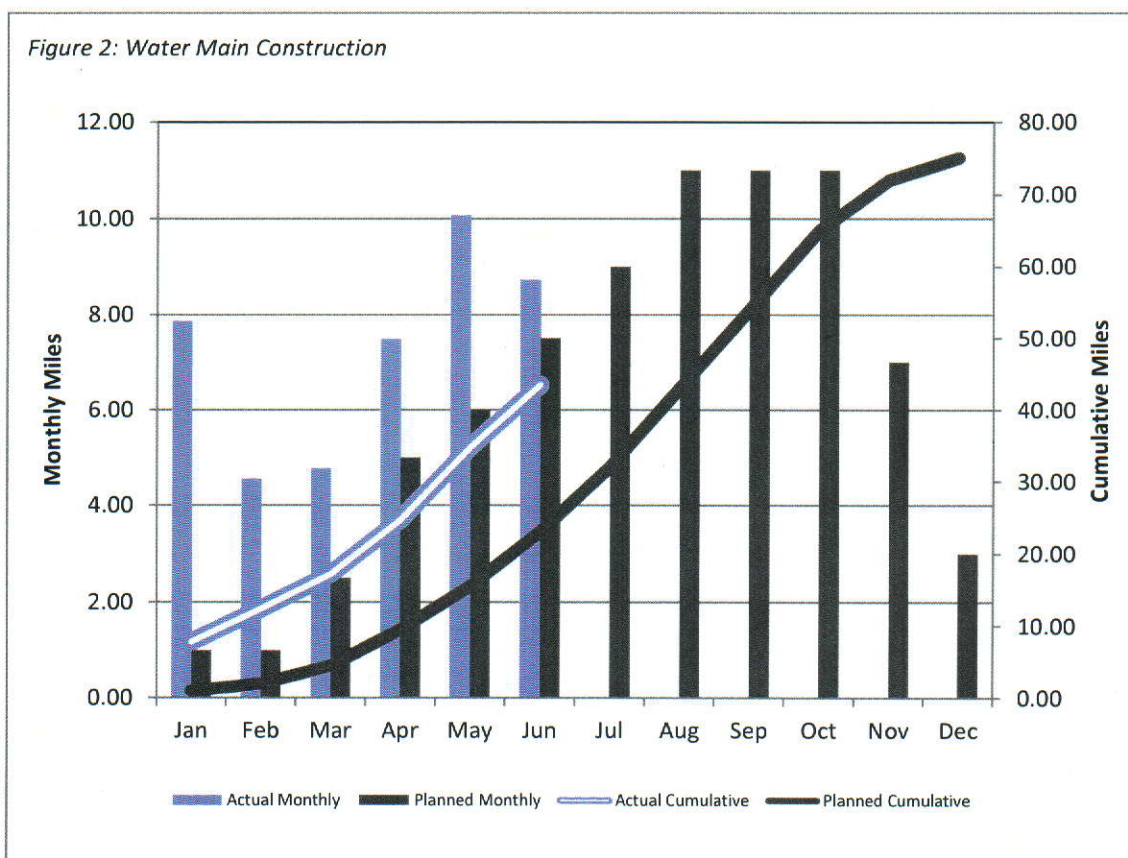
## 2013 MID-YEAR REPORT TO SUBURBAN CUSTOMERS

### CONSTRUCTION

#### *Water Main Construction*

The Department will completed 75 miles of water main installation in 2013, five (5) miles more than the 2012 program. The Department utilizes both in-house and local private contractors to fulfill its aggressive agenda and our goal to be able to provide water for future customer growth expected in the suburbs without having to increase capacity at our treatment plants.

Figure 2 represents planned versus actual monthly and cumulative totals. As reflected in figure 2, the Department installed 70 miles of water main.





---

## 2013 MID-YEAR REPORT TO SUBURBAN CUSTOMERS

### FACILITIES

---

#### *Facilities*

In 2012, the Department of Water Management embarked on two large-scale, multi-year projects at two of its facilities. A summary of the work completed thru June 30, 2013 for these two projects follows.



#### *Jardine East Filter Building Roof*

The Department with the assistance of the DPS has entered into a contract with Walsh Construction Company to replace the original roof on the East Filter Building at the Jardine Water Purification Plant. The scope of the work includes: Construction of temporary scaffolding to protect the treatment units during construction; Removal and replacement of existing precast concrete roof panels; Installation of membrane roof over new concrete roof panels; Selective removal and replacement of damaged steel beams, columns and purlins; Removal of existing lead paint and repainting of steel roof support structure; and installation of new lighting. The cost of this project for design and construction is \$37.5M. The roof is approximately 10 acres and is located over half of the active treatment plant. The estimated completion date is April 2014. The work is divided into 8 phases. The contractor has completed the first three phases, including installation of the new concrete roof panels and new roof membrane. Work is proceeding on the next two phases (50% complete on one, and 15% complete on the second) including lead abatement, replacement of deteriorated structural steel, painting of the steel, removal of existing roofing, and installation of new roofing panels.



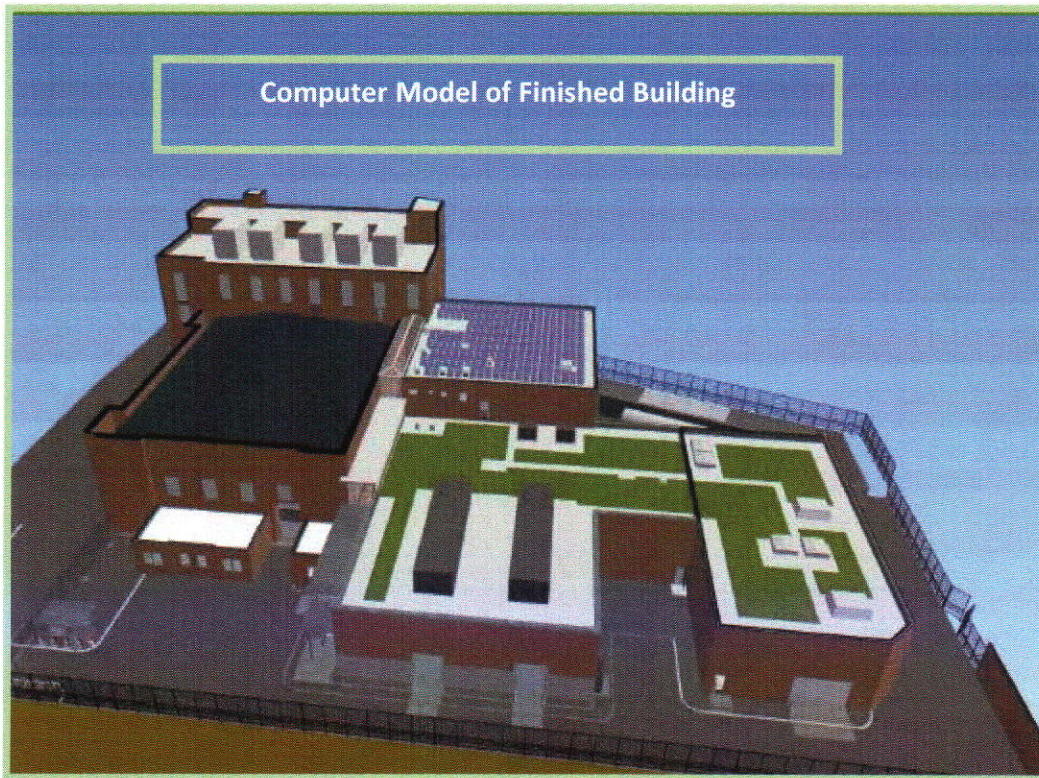
*Installation of New Roof Panels*



*Facilities, Cont.*

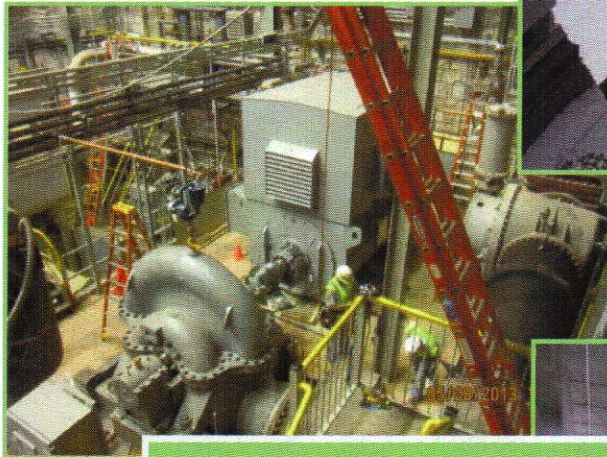
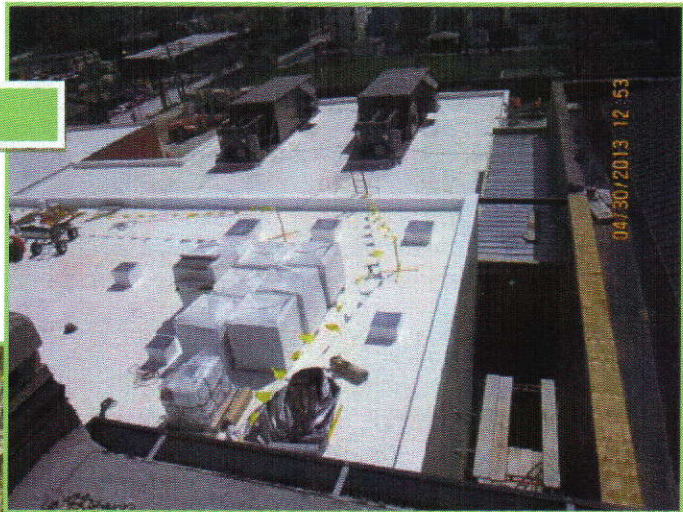
*Springfield Pumping Station Conversion*

The Department awarded and started a 3-year construction project to convert the Springfield Avenue Pumping Station from steam to electric power. This station is one of four that is steam powered. The cost for design and construction is \$73M. This contract was awarded to FH Paschen/SN Nielsen & Associates. The scope of work includes: replacement of existing steam turbines on 5 pumps with electric motors; demolition of existing buildings, boiler system and stack; construction of LEED certified building to house new electrical equipment, variable speed drive equipment, maintenance shops, and control room; and, green roof and installation of solar panels. The expected completion date is July 2015. Once completed, the Department expects to save \$4.5M annually in energy, maintenance and personnel costs. The new electrical building, ComEd vault and solar installation are 80% complete. Pump No. 4 has been refurbished and the new electrical motor installed. This is the first unit to be converted from steam to electric.





*Roof Mounted HVAC Units*



*Pump No. 4*



*Newly installed Electrical & Ventilation*



---

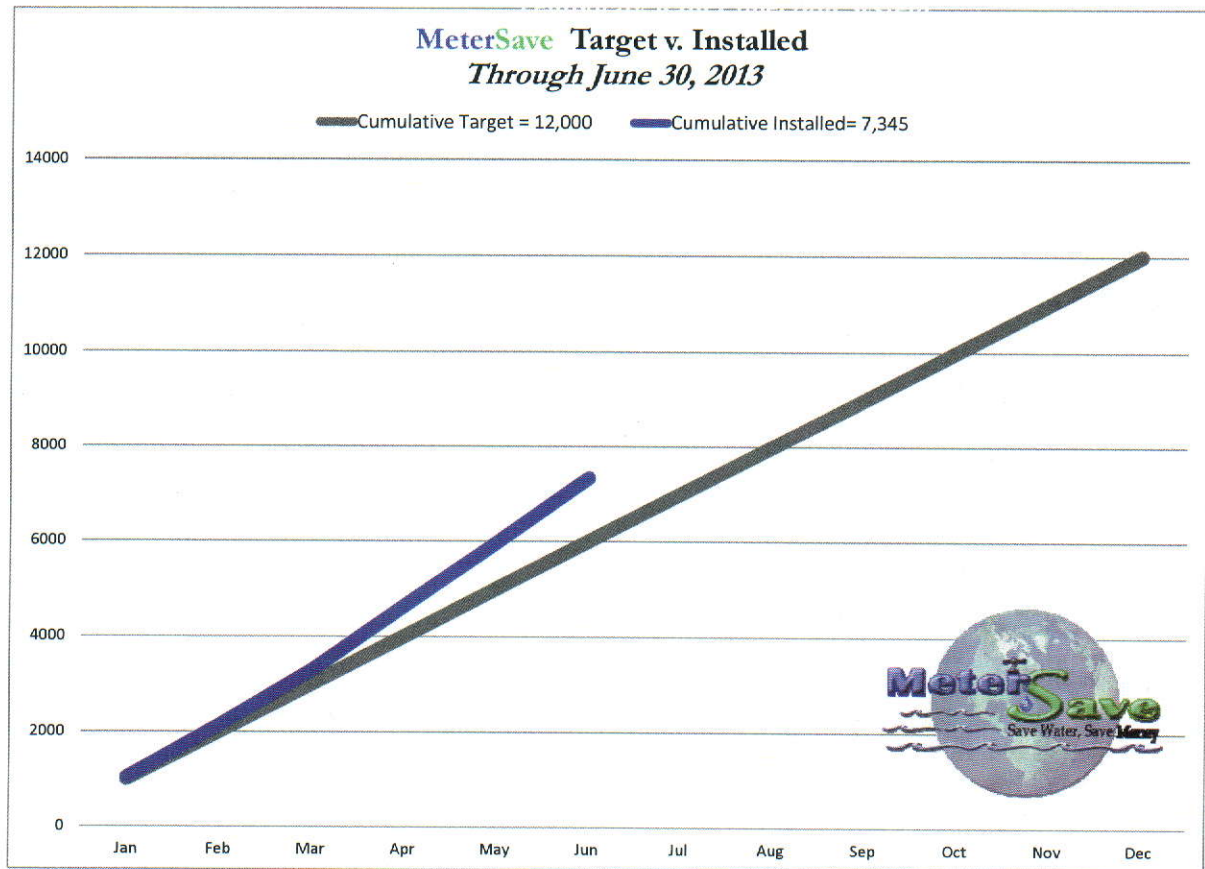
## 2013 MID-YEAR REPORT TO SUBURBAN CUSTOMERS

### METERSAVE PROGRAM

---

#### *MeterSave Program*

MeterSave is a voluntary, free meter installation program offered to single-family and 2-flat non-metered homeowners. The Department's goal is to ensure that our citizens become more mindful and aware of their water usage in an effort to conserve water for future population growth and generations to come. From its inception in March 2009 through June 30, 2013 35,901 homeowners volunteered for the MeterSave Program. Also, DWM has new meters during this same time period. The Department is on pace to meet its goal of 12,000 meter installations in 2013. Education is a major component of this program. The Department, by providing tools and resources to conserve water, seeks to ensure that our citizens are aware of their water usage and become environmental stewards in protecting our water source, Lake Michigan. Ultimately, at the conclusion of metering the Department projects that enough water will be saved to serve an additional 300,000 people throughout the region.



#### *Leak Detection*

The Department annually surveys water mains to identify underground leaks in the system before they become large, catastrophic water main breaks. Through June 30, 2013 approximately 1,007 miles of water mains were surveyed using specialized sonar technology. Of the 1,007 miles surveyed, approximately, 246 leaks, excluding fire hydrants, were located and work orders for follow-up investigation and repair have been created. This program tightens our system to allow for more water to be conserved and available for growth in the region.

#### *Water Main Breaks*

When a break happens the Department shuts the main off (redundancy in the system will allow for continued water service and typically does not impact customers) and attempts to schedule the repair at minimal expense. It is intended that the Department's water main replacement program will ultimately result in less water main breaks and repairs. The original engineers of the Chicago Water System were visionaries. By creating the redundancy and reliability in the Chicago Water System, customers rarely suffer outages and can expect a reliable and adequate supply of water. Were the Department to ignore the needs of the System there would be an increase shutdowns to replace aging infrastructure and the loss of a reliable supply of water would become a common occurrence.

---

### 2013 MID-YEAR REPORT TO SUBURBAN CUSTOMERS

#### BILLING & COLLECTIONS

---

#### *Billing*

Below is a chart of the billing and collections for 2013 through June 30, 2013. The 2013 Budget can be found at the City of Chicago's website at:

[http://www.cityofchicago.org/city/en/depts/obm/dataset/budget\\_-\\_2013\\_budgetordinance-appropriations.html](http://www.cityofchicago.org/city/en/depts/obm/dataset/budget_-_2013_budgetordinance-appropriations.html).

Additionally, the 2011 financial audit of the water fund can be found at the City's website at: [http://www.cityofchicago.org/content/dam/city/depts/fin/supp\\_info/CAFR/2012/Water2012.pdf](http://www.cityofchicago.org/content/dam/city/depts/fin/supp_info/CAFR/2012/Water2012.pdf)

Jan - June, 2013	Total	City	Suburban
Total Water Billing	\$ 288,691,147.00	\$ 158,047,468.00	\$ 130,643,679.00
Water Collections	\$ 275,940,029.00	\$ 149,035,059.00	\$ 126,904,970.00

---

## 2013 MID-YEAR REPORT TO SUBURBAN CUSTOMERS

### SUMMARY

---

#### *Summary*

As the region's population is expected to increase significantly by 2050 it is imperative that the Chicago Water System be optimally operating both from the treatment and distribution perspectives. The Department of Water Management is back on track to revitalize the distribution system, convert steam stations to electric, replace aging facilities, and install water meters. The Department's aggressive Capital Improvement Program will conserve enough water to provide for an additional 700,000 people without major capacity build-outs at our facilities. Failure to take these measures would result in a less reliable system that will not meet the future needs of our regional customer base; a continual, reliable and quality supply of water.



---

## APPENDIX A

---

### A. List of Capital Improvement Projects Budget v. Expense

Please Note: DWM relies on data through June 30, 2013. The financial data is based upon raw data and has not been audited.

**2013 Water Capital Improvement Program**  
 Estimated and Actual Expense as of 7/2/13

PROJECT	2013 ESTIMATED EXPENSE	2013 CALENDAR YEAR EXPENSE
0301028 - N. RICHMOND FROM W. IRVING PARK BLVD. TO W. ADDISON ST.	416,860.04	233,093.11
0501136 - E. 117TH PL. FROM S. STATE ST. TO S. INDIANA AV.	72,046.79	45,612.41
0501144 - W. Lake St. - N. Damen Ave. to N. Ashland Ave.	-	8,552.28
0501149 - E. VAN BUREN ST. FROM S. MICHIGAN AVE. TO S. WABASH	139,805.55	143,540.36
0501378 - W. Augusta - N. Western to N. Oakley Ave.	5,620.97	(2,900.19)
0601130 - N. FAIRFIELD AV. FROM W. GEORGE ST. TO W. WELLINGTON AV.	-	4,485.59
0601305 - N. DRAKE W. FULLERTON AVE. TO WRIGHTWOOD AVE	65,508.86	12,713.07
0601328 - W. Locust From N. Franklin St. To N. Wells St., N. Franklin From W. Oak St. To W. Chicago	307,941.71	64,374.30
0601337 - N. Bissel From W. Armitage To W. Willow Ave., W Wisconsin From Sheffield Bissell	-	187,035.76
0601338 - W. Hirsch St. from N. Long to N. Laramie Ave.	67,523.85	14,522.01
0701008 - W. Congress From S. Ogden To Damen Ave., S. Wolcott From W. Congress To W. Harrison	-	4,241.98
0701023 - S. EUCLID AVE. FROM E. 67TH ST. TO E. 71ST. ST.	170,422.21	80,985.80
0701066 - N. Mozart St. From W. Armitage Ave. To W. Dickens Ave.	57,441.96	3,133.35
0901031 - N. WELLS ST TO W. NORTH AV. TO W. SCHILLER ST.	448,022.97	398,298.61
0901038 - W. Ogden Ave. from W. Roosevelt Rd. to W. 13th St.	-	2,380.03
0901051 - S. CALIFORNIA AVE TO W. 51ST ST. TO W. 53RD ST.	104,371.48	31,689.00
0901078 - N. CALIFORNIA AVE. FROM W. PETERSON AVE. TO N. LINCOLN AVE.	47,391.85	1,248.36
0901124 - W. 123RD ST. FROM S. WENTWORTH AVE. TO S. STATE ST.	24,084.07	16,130.13
0901155 - E. 44th Street from S. St. Lawrence Ave. to S. Drexel Blvd.	21,415.00	63,878.23
0901182 - S. Sacramento Ave. From W. 36th St. To W. 36th Pl.	-	1,421.42
0901183 - S. LANGLEY AVE E. FROM 111ST ST TO E. 114TH ST	-	102,788.43
1001001 - W. LUNT FROM N. RAVENSWOOD TO N. ASHLAND BLVD	456,463.67	401,048.85
1001002 - W. FARWELL AVE. FROM N. RIDGE BLVD. TO N. ASHLAND AVE.	82,097.93	22,585.29
1001010 - N. GREENVIEW AVE. FROM W. BYRON ST. TO W. GRACE ST.	-	5,749.90
1001012 - ROSCOE ST. FROM N. RACINE AVE. TO N. SHEFFIELD AVE.	-	8,407.35
1001028 - W. BELDEN AVE. FROM N. HALSTED ST. TO N. LINCOLN AVE.	16,112.43	22,709.47
1001043 - N. Dearborn St. from W. Division St. to W. Chicago	112,455.37	18,244.30
1001044 - W. Ohio St. from N. Ausitn Blvd. to N. Menard Ave.	41,986.06	17,044.81
1001054 - W. Adams St. from S. Kenton Ave. to S. Kostner Ave.	96,909.14	11,816.07
1001055 - W. 5th Ave. from S. Kedzie to S. Sacramento	555,412.26	401,020.10
1001069 - W. Cullerton St. from S. Damen Ave. to S. Ashland Ave.	664,169.00	577,257.07
1001070 - S. Wood St. from W. 19th St. to W. 23rd St.	183,914.48	407,311.67
1001071 - S. Wood from 630' W. 18th to 19th St, W. 18th Pl from 670' S. Wood to S. Paulina St	-	9,571.87
1001073 - S. Loomis St. from W. 21st St. to W. Cermak Rd.	23,143.76	5,724.60
1001077 - W 24th From S Ridgeway To S Lawndale, S. Lawndale From W. Cermak Rd. To 26th	92,344.61	19,963.95
1001095 - W. 43rd St. from S. Kedzie Ave. to S. Albany Ave.	-	4,630.70
1001097 - S. Oakley W. 50th To W. 51st, W. 50th Place -300' WWL S. Oakley- 487' EEL S. Oakley	37,971.95	11,463.65
1001112 - W. 68TH ST. FROM S. HAMILTON AVE. TO S. DAMEN AVE.	13,144.56	5,339.18
1001129 - S. Ewing Ave From E 101st St To E 103rd St	87,552.87	10,719.55
1001132 - S. PERRY AVE. FROM W. 118TH ST. TO W. 120TH ST.	43,152.44	9,789.37
1001134 - W. Lunt Ave. From N. Ashland Ave. To N. Sheridan Rd.	-	18,303.71
1001140 - N. Hamilton Ave. from W. Irving Park Road to W. Grace St.	53,701.16	6,177.71
1001143 - SHAKESPEARE AVE. FROM N. HUMBOLDT BLVD. TO N. CALIFORNIA AVE.	-	1,975.20
1001147 - S. Oakenwald Ave. from E. 43rd St. to E. 44th Pl.	89,884.84	52,299.37
1001148 - S. Kimbark Ave. from 300' NNL. of 48th St. to E. 50th St.	-	22,415.59
1001152 - E. 70TH ST. FROM S. DORCHESTER AVE. TO S. STONY ISLAND AVE.	70,726.79	50,447.59
1001181 - S. Union Ave from W. 29th St. to W. 31st St	262,185.22	366,592.42
1101001 - N. Broadway Ave. From W. Ardmore Ave. To W. Bryn Mawr Ave.	149,021.88	31,959.36
1101008 - W. Van Buren Ave. - S. Kostner Ave. to S. Keeler Ave.	46,785.81	87,746.43
1101010 - S. Drake Ave. - W. Cermak Rd. to W. 26th St.	-	24,112.13
1101012 - S. Artesian Ave. - W. Pershing Rd. to W. 40th St.	-	1,423.49
1101015 - S. Union From W. 53rd To W. Garfield , W. 53rd St. From S. Emerald To S. Lowe	21,217.01	-
1101017 - W. 68TH PL. - S. HAMILTON AV. TO S. DAMEN AVE.	-	7,141.65
1101020 - E. 72nd Pl From S. Euclid To S. Jeffery, E. 72nd From S. Euclid To S. Jeffery	69,478.95	7,025.53
1101023 - S. Huron from N. Morgan to N. Sangamon, N. Morgan from N. Milwaukee to W. Chicago	-	7,315.10
1101026 - W. LAWRENCE AV - N. MENARD AV TO N. CENTRAL	173,745.71	14,861.69
1101035 - S. Tripp Ave. - W. 43rd St to W. 45th St	92,787.50	10,625.57
1101039 - S. Justine St. From W. 53rd St. To Alley north of Garfield Blvd.	140,838.38	73,476.67
1101040 - W. 54TH PL. - S. HALSTED ST TO S. WALLACE ST.	173,760.35	140,122.79
1101041 - S. HERMITAGE AV. - 61st ST TO W. 63rd ST	89,343.13	9,896.83
1101043 - S. Harper From E. 70th St To E. 71st St., S. Dante Ave. From E. 70th St. To E. 71st St.	52,549.85	9,208.96
1101045 - E. 81st Pl From 500' WWL Woodlawn To Woodlawn., E. 82nd Pl -580' WWL Woodlawn	60,438.00	5,372.57
1101046 - E. 81st From S. Dorchester To S. Stony Island, S. Blackstone From E. 79th St. To E. 81st	92,231.45	7,345.66
1101050 - N. LaSalle Dr. - W. Chicago to W. Grand Ave.	-	2,728.91

**2013 Water Capital Improvement Program**  
 Estimated and Actual Expense as of 7/2/13

PROJECT	2013 ESTIMATED EXPENSE	2013 CALENDAR YEAR EXPENSE
1101056 - W. North - Clark St to N. Dearborn St. Dearborn to W. Burton Place	-	1,235.20
1101057 - N Dearborn From W North To W Division,W. North. From N. Clark To N.State Pkwy.	175,609.16	93,347.63
1101059 - 114TH ST. - COTTAGE GROVE TO RR	21,127.76	2,544.64
1201002 - N. WOLCOTT FROM W. MORSE AVE. TO W. PRATT BLVD.	-	6,745.79
1201006 - N. BROADWAY AVE. FROM W. BRYN MAWR AVE. TO W. BALMORAL AVE.	60,596.72	75,208.68
1201007 - W. Belle Plaine From N. Keystone To N. Pulaski,N. Keystone- W. Berteau To W. Belle	43,885.87	6,316.87
1201009 - N. CLIFTON AVE. FROM W. GRACE ST. TO W. WAVELAND AVE.	-	4,336.13
1201014 - N. ELSTON AVE. FROM W. WELLINGTON AVE. TO N. MAPLEWOOD AVE.	-	7,473.58
1201016 - N. BROADWAY AVE. FRO. W. WELLINGTON AVE. TO W. DIVERSEY PKWY.	42,679.42	7,793.61
1201022 - W Shakespeare Ave From N Hamlin Ave To N St Louis Ave	838,725.41	757,467.40
1201023 - S. Avenue "L" From E. 103rd To E. 106th St.,E 105th From S Avenue M To S Ewing	82,754.67	17,778.64
1201025 - W. DICKENS FROM N. LAKEWOOD TO N. SEMINARY	124,286.95	207,436.37
1201031 - W. SHAKESPEARE FROM N. WESTERN AVE. TO N. LEAVITT AVE	167,623.28	147,203.64
1201032 - N. JANSSEN AVE. FROM W. WEBSTER AVE. TO W. FULLERTON AVE.	134,811.10	128,456.15
1201033 - N. RACINE AVE. FROM W. WEBSTER AVE. TO N. CLYBOURN AVE.	305,459.98	419,321.65
1201034 - N. Drake From W. Armitage To W. Cortland, St. Louis From W. Armitage To W. Bloom	304,155.27	293,181.19
1201035 - W. ARMITAGE FROM N. RACINE TO N. SHEFFIELD	-	16,104.45
1201038 - W. POTOMAC FROM W. HOMAN TO N. KEDZIE	4,806.28	9,116.31
1201040 - N. ORLEANS ST. FROM NORTH AVE. TO W. SCHILLER	-	4,534.66
1201044 - N. Harding Ave. from W. Chicago to W. Ferdinand	-	1,814.83
1201046 - N. Artesian From W. Ohio To W. Hubbard, W. OhioFrom N. ArtesianTo N. Western	804.17	12,538.38
1201058 - W. Ogden Ave. from S. Rockwell St to S. Campbell Ave.	4,864.23	2,609.12
1201061 - S. Carpenter St. from W. 16th St. to W. 18th St. / W. 17th St. from S. Racine Ave. to S. Carpenter St.	-	6,146.11
1201063 - S. Millard Ave. from W. Cermak to 26th St.	-	10,256.18
1201065 - W. 25th form S. Troy To S. California, S. Francisco From W. 25th To 360' North of W. 25th.	461,490.33	475,676.47
1201069 - S. AlbanyFrom W. 43rd To W. 47th,W. 44th- S. Kedzie To 125' East of S. Albany	-	64,213.26
1201075 - S. MARTINF LUTHER KING DR. FROM 51ST ST TO E. 53RD ST	23,285.10	14,157.92
1201079 - S. LOOMIS BLVD FROM W. 61ST ST. TO W. 63 ST.	-	5,900.54
1201081 - S. Damen Av. from W. 35th St. to W. 37th St., S. Winchester from W. 35th to W. 37th, W.36	119,185.03	83,725.25
1201084 - S. SANGAMON ST. FROM W. 63RD ST. TO W. 65TH ST.	-	9,600.42
1201087 - W. 70th From S. Hamilton To Damen,S. Hoynes-70th,S Damen- W 70th-W 70th Pl	210,676.25	100,812.81
1201089 - S. MARSHFIELD FROM W. 73RD TO W.74TH, S. PAULINA FROM W. 73RD TO 74TH	32,439.19	2,976.02
1201091 - E. 74TH ST. FROM S. EXCHANGE AVE. TO SOUTH SHORE DR.	52,505.49	20,487.39
1201093 - S. Southshore From E. 82nd To E. 83rd.,S. Coles From E. 82nd St. To E. 83rd	31,024.16	17,736.06
1201099 - S. Saginaw From E. 87th To E. 89th ,S. Colfax From E. 87th To South Chicago	-	20,591.95
1201100 - S. HOUSTON AVE. FROM E. 89THST. TO 91ST ST.	-	2,413.87
1201108 - W. 116th From S. Lafayette To S. State, S. Lafayette From W. 115th To W. 116th	-	10,305.75
1201109 - S Harvard From W 119th To W 120th, W. 120th -Lowe Princeton,Yale - W 119th , 117th	-	18,797.12
1201115 - 01115- E. 87th PL S. ST. LAWRENCE AV TO S. COTTAGE GROVE	115,737.71	44,779.53
1201116 - W. Kinzie St. - N. Carpenter St. to N. Sangamon St.	46,139.49	31,513.03
1201119 - S. Normal From W. 97th . To W. 98th Pl.,W. 97th Pl. From S. Normal To W. Eggleston	-	9,693.28
1201120 - S. Michigan from E. 47th St to E. 49th St.	-	468.43
1201121 - S. BUFFALO AVE FROM E. 87TH TO E. 90TH	200,539.11	243,719.81
1201122 - S. Wolcott From W. 35th St. To W. 37th St.	29,956.69	7,200.62
1201123 - S Kedvale From W 26th St To W 31st St,W 28th St From S Keeler To S Kedvale	227,686.54	183,977.41
1201125 - W. Wolfram From N. Lawndale To Central Park, N. Lawndale-W. George- W. Diversey	216,995.39	152,049.82
1201127 - W. BEACH AVE. FROM N. HOMAN TO N. KEDZIE, N. Spaulding - W. Lemoyne to W. Beach	24,046.79	9,646.19
1201128 - Lawndale From W LeMoyne To W Grand Ave	70,261.77	2,440.53
1201132 - W. PARKER FROM ST LOUIS TO N. KIMBALL	184,691.34	184,443.72
1201134 - W George From N Ashland To N Southport, W Wolfram From N Ashland - Southport	312,871.77	362,303.81
1201135 - W. 117TH ST. FROM S. STEWART AVE TO S. PERRY	153,977.32	197,434.55
1201141 - S Sangamon St From Alley S of 55th St To 59th St	113,490.05	42,692.33
1201142 - EBERHART FROM ANTHONY TO 71ST ST.	26,379.97	19.24
1201143 - AVE. "N" FROM 106TH TO 108TH	18,363.17	5,191.43
1201146 - N. Keating Ave. from W. Grand to W. North Ave.	218,529.87	160,852.24
1201147 - S. RHODES FROM E. 63RD ST TO E. 65TH ST.	25,793.96	9,363.03
1201149 - S Prairie Ave From E Marquette Rd To E 69th St	125,728.05	150,931.24
1201150 - N. Kolmar from W. Grand Ave to W. North Ave.	24,821.61	12,109.22
1201155 - S. VERNON FROM E. 69TH ST TO E. 71ST ST	69,589.15	100,255.54
1201157 - E. 72nd Pl- S. Blackstone - S. Stony Island,E. 74- Blackst - Stony Island,E. 73- S. Ston	136,371.23	95,681.21
1201158 - S. BLACKSTONE FROM E. 74TH TO E. 75TH	-	10,246.15
1201159 - S. KEDZIE FROM W. 55TH TO W. 59TH	485,103.03	14,740.80
1201160 - W. 41st St. from S. Kedzie to S. Sacramento	80,963.14	77,624.23
1201169 - N Kilpatrick Ave From W Armitage Ave To W Palmer St	41,081.55	7,167.29
1201170 - W. GEORGE FROM N. FAIRFIELD TO N. TALMAN	17,324.93	8,606.02



**2013 Water Capital Improvement Program**  
Estimated and Actual Expense as of 7/2/13

PROJECT	2013 ESTIMATED EXPENSE	2013 CALENDAR YEAR EXPENSE
1201174 - W. Waveland Ave. From N. Broadway Ave. To N. Sheridan Rd.	466,117.64	503,746.85
1201176 - W. DEMING FROM N. ORCHARD TO N. GENEVA TERR	54,467.67	11,416.94
1201177 - N. Mango From W. Grand To W. Armitage	270,287.00	82,174.97
1201180 - W. Van Buren From S. Keeler To S. Pulask, S Karlov From W Gladys To W Congress Pkwy	59,849.48	198,395.50
1201183 - W. Thomas from N. Kostner to Keeler	81,426.82	67,388.35
1201185 - S. Morgan from W. 35th to 37th St	139,631.74	0.21
1201187 - W. 36th St from S. Sangamon St to S. Halsted	49,557.27	3,430.01
1201189 - W MONTROSE AVE AT APPROXIMATELY 150 FT W OF N MARINE DR	109,834.58	
1201191 - W Adams St from S Cicero Ave to S Kenton Ave	372,984.65	365,822.74
1201195 - S Archer Ave from S Kedzie Ave to S Sacramento Ave, S Kedzie Ave from Archer to W 44th St	629,565.72	595,540.02
1301001 - W Fulton Market from N. Ada to N. Racine St.	5,419.83	19,627.17
1301003 - N. Laramie Ave. from W. Chicago to W. Ohio St.	26,378.76	134.19
1301005 - S. Michigan Ave. from E. 101st St. to E. 104th St.	-	278,942.52
1301006 - N. Wells from W. Oak St. to W. Chicago	-	12,831.84
1301007 - W. WEBSTER AVE. FROM N. DOMINICK ST TO N. SOUTHPORT AVE	-	43,605.40
1301009 - S. Woodlawn From E. 69th St. To E. 71st, E. 70th From S. Woodlawn To S. Kimbark	177,646.88	220,168.94
1301013 - N. AVERS FROM W. DIVERSEY TO W. WRIGHTWOOD AVE	37,152.51	(9,770.93)
1301015 - W. MEDILL FROM N. CENTRAL PARK TO KIMBALL AVE, N ST LOUIS FROM W MEDILL AV TO W BELDEN AV	-	960.15
1301016 - N DAMEN AVE FRM W CHURCHILL - W NORTH AVE, W CONCORD PL FRM 220' WWL OF DAMEN - N DAM	620,544.03	525,224.32
1301017 - N. Spaulding from W. Chicago to W. Ohio	83,961.95	26,495.70
1301018 - W. Maypole from N. Kostner to N. Keeler	104,393.59	9,496.30
1301022 - W. 109TH PL FROM S STEWART TO S. STATE AVE	413,586.17	283,576.50
1301027 - W Flournoy St From S Kedzie Ave To S California Ave	270,399.41	254,531.21
1301031 - S. University Ave. from E. 71st St. to E. 72nd St.	176,849.00	186,842.59
1301032 - S. WENTWORTH AVE FROM W. 103RD TO W. 107TH	394,523.35	167,133.85
1301035 - S KENWOOD AVE FROM E 63RD ST TO E 67TH ST	842,041.79	759,870.12
1301041 - S. Perry From W. 123rd St. To W. 124th, S. Lafayette From W. 123rd To W. 124th	52,252.73	30,377.13
1301043 - W 61ST ST FROM S. ST. LOUIS TO S. SPAULDING	93,791.51	143,762.69
1301044 - S EBERHART AVE FROM E 63RD ST TO E 65TH ST	58,606.56	6,577.71
1301049 - S YALE AVE FROM W 69TH ST TO W 74TH ST	552,709.22	284,651.28
1301051 - S. LOOMIS BLVD FROM W. GARDFIELD BLVD TO W. 59TH	211,081.28	198,483.90
1301057 - S BISHOP ST FROM ALLEY S OF W GARFIELD BLVD TO W 57TH ST	17,558.55	9,211.51
1301061 - W. Churchill St. from N. Leavitt Ave. to N. Damen	180,983.47	144,690.54
1301062 - N. Washtenaw Ave. from W. Augusta Blvd to W. Chicago Ave.	95,621.90	139,409.87
1301063 - W. Hermitage from W. August to W. Chicago, W. Walton from N. Hermitage to N. Paulina	308,886.90	192,598.87
1301076 - S. Paulina St. from W. 69th ST. to W. 71st St.	393,691.00	383,541.31
1301081 - E. 118th Pl. from S. State St. to S. Indiana Ave.	182,423.00	319,604.35
1301235 - 41st St - S. St. Lawrence to S. Cottage Gr.	134,818.17	9,362.63
1301263 - N. Richmond St. from W. Palmer St. to W. Armitage Ave. / W. Dickens Ave. from N. Humboldt to N. Moza	-	44,174.65
1301240 - N.KEELER-W.WEST END- W. MADISON ST., N.KOSTNER-W. WEST END-W. MADISON ST.	511,588.00	351,343.65
1301088 - N LEAMINGTON AVE FROM W THOMAS ST TO W AUGUSTA BLVD	202,944.00	232,994.60
1301070 - S.MORGAN-W.83RD -W.87TH ST.,W.85TH-S.MORGAN-S.SANGAMON ST.,W.86TH-S.MORGAN-S.SANGAM	986,936.00	804,250.00
0601341 - W. SCHILLER ST. FROM N. LASALLE ST. TO N. CLARK ST.	32,414.67	17,229.92
1301034 - W 111TH PL FROM S WESTERN AVE TO S BELL AVE	291,430.00	321,507.13
1201102 - S. WINCHESTER AVE FROM W. 93RD ST. TO W. 95TH ST.	351,830.00	273,141.88
1301274 - N. KEWANEE AVE FROM N. KELSO AVE TO N. KEDVALE AVE	192,676.00	243,580.32
0601303 - N. BERNARD AVE FROM W. BERTEAU AVE TO W. MONTROSE AVE	382,332.00	414,946.16
1301223 - N. BISSELL ST. FROM W. WILLOW ST. TO N.DAYTON ST.	286,296.00	363,904.85
1301045 - E 72ND ST FROM S INGLESIDE AVE TO S ELLIS AVE, S INGLESIDE AVE FROM E 71ST ST TO E 72ND ST	279,954.00	284,076.16
1301093 - N HUMBOLDT BLVD FROM W PALMER ST TO W ARMITAGE AVE	473,234.00	479,763.07
1301261 - N. LECLAIRE AVE FROM W. THOMAS ST. TO W. AUGUSTA BLVD.	215,326.00	265,378.89
1301077 - S. HAMILTON AVE FROM W. 65TH ST. TO W. MARQUETTE RD.	417,666.00	331,717.15
1301204 - N.DRAKE AVE-N. MILWAUKEE AVE-W. DIVERSEY AVE, W.WOLFRAM ST.-N. DRAKE AVE-N. MILWAUKEE A	400,150.00	371,672.58
1301218 - N. KEELER AVE FROM W. ARMITAGE AVE TO W. NORTH AVE	796,676.00	945,652.23
1301212 - S.HARVARD-W.64TH-W.65TH,W.65TH-S.STEWART-S.YALE,W.64TH-S.STEWART-S.HARVARD	600,980.00	545,524.70
1201008 - N. HERMITAGE FROM W. MONTROSE TO N. IRVING PARK, W.CULLOM FROM N.RAVENSWOOD TO N.HER	871,874.00	626,518.80
1301073 - W 86TH PL FROM S SANGAMON ST TO S SUMMIT AVE	185,730.00	204,117.85
1301046 - S GREENWOOD AVE FROM E 71ST ST TO E 72ND ST	191,468.00	177,184.15
1301099 - N.LECLAIRE-W.FULTON-W.WEST END AVE, W.MAYPOLE-N.LECLAIRE-N.LAVERGNE AVE	477,764.00	581,709.11
1301130 - S. BUFFALO AVE FROM E. 133RD ST. TO E. 136TH ST.	608,228.00	489,548.80
1301029 - N MOZART ST FROM W. PALMER ST TO W. DICKENS AVE	229,218.00	226,664.08
1301247 - N MARSHFIELD AVE FROM W IRVING PARK RD TO W BYRON ST	187,240.00	189,964.92
1301143 - E. 42ND PL- DR. MLK JR. DR.- ST LAWRENCE AVE, ST.LAWRENCE AVE-E.42ND ST.- E.43RD ST.	578,632.00	494,271.43
1301250 - S. WOLCOTT AVE. FROM W 37TH ST TO W 38TH ST	195,394.00	201,640.10
1301069 - S ABERDEEN ST FROM W 85TH ST TO W 86TH ST, W 85TH ST FROM S ABERDEEN ST TO S CARPENTER ST	307,436.00	202,617.99

**2013 Water Capital Improvement Program**  
 Estimated and Actual Expense as of 7/2/13

PROJECT	2013 ESTIMATED EXPENSE	2013 CALENDAR YEAR EXPENSE
1301284 - W. MADISON ST. FROM N. KENTON AVE TO N.KOSTNER	427,632.00	495,836.30
1208034 - S. ST. LOUIS ST. - W. 51ST STREET TO 448">NNL OF 51ST ST	135,296.00	133,382.99
1301232 - S RIDGEWAY AVE. FROM W. 47TH ST. TO S. ARCHER AVE.	192,072.00	159,082.44
1301262 - N. LAWLER AVE FROM W. THOMAS ST. TO W. AUGUSTA BLVD.	186,334.00	185,343.53
1301038 - E 100TH PL FROM S STATE ST TO S MICHIGAN AVE, S STATE ST FROM E 100TH ST TO E 101ST ST	494,072.00	523,544.67
1301121 - W. 24TH ST. FROM S. PULASKI RD. TO S. HAMLIN AVE	418,572.00	273,335.26
1301160 - W. WALTON ST. FROM N. CENTRAL AVE TO N. LONG AVE	384,144.00	389,110.75
1301259 - S. RIDGEWAY AVE FROM S. ARCHER AVE TO W. 49TH ST.	160,664.00	114,679.52
1301066 - W PALMER ST FROM N MAPLEWOOD AVE TO N WESTERN AVE	323,744.00	356,940.09
1301126 - W. HIRSCH ST. FROM N. CENTRAL PARK AVE TO N. HOMAN AVE	414,042.00	380,082.77
1301180 - N. KEDVALE AVE FROM W. NORTH AVE TO W. GRAND AVE, KEDVALE FROM WABANSI	381,728.00	378,733.65
1001106 - S. MAY ST. FROM W. 61ST ST. TO W. 63RD ST.	374,480.00	309,785.61
1301265 - S. WABASH AVE FROM E. 75TH ST. TO E. 77TH ST.	379,010.00	326,524.40
1301238 - W 111TH ST FROM C&W R. R. S. STEWARD AVE TO S WENTWORTH AVE	392,902.00	300,137.54
1301184 - S. ALBANY AVE FROM W. PERSHING RD TO W. 41ST ST.	406,794.00	341,025.64
1301185 - S. FRANCISCO AVE-W.40TH PL.-S. ARCHER AVE, W.40TH PL.-S. SACRAMENTO AV	544,506.00	456,427.17
1301079 - N.MASON AVE-W.FULLERTON AVE-W.GRAND AVE, N.MARMORA AVE-W.FULLERTON AV	746,242.00	743,998.72
1301260 - S. LAWDALE AVE. FROM W. 47TH ST. TO S. ARCHER AVE.	119,592.00	116,549.73
1201103 - S. DOBSON AVE FROM E. 91ST ST. TO E. 93RD ST.	388,674.00	317,719.88
1301194 - S. SPRINGFIELD AVE FROM W. 14TH ST. TO W 16 ST, W 14TH ST FROM S PULASKI RD TO S AVERS AVE	677,688.00	456,992.72
1301207 - S.MORGAN-W.117TH-W.119TH,W.117TH-S.MORGAN-S.SANGAMON,W.118TH-S.MORGAN-S.SANGAMON	394,412.00	232,991.09
1301245 - S ELLIS AVE FROM E 91ST ST TO E 93RD ST	396,526.00	329,265.53
1101048 - N. KENNICOTT AVE FROM N. ELSTON AVE TO N. KARLOV AVE.	402,264.00	380,313.36
1301113 - N.LOCKWOOD-W.AUGUSTA-W.CHICAGO,N.LOREL-W.AUGUSTA-W.CHICAGO,W.IOWA-N.LONG-N.LOCKWOOD	1,009,284.00	787,823.19
1301231 - W 38TH ST FROM S ST. LOUIS AVE TO S SPAULDING AVE	427,632.00	480,872.13
1301131 - S. HOUSTON AVE FROM E. 130TH ST. TO E. 133RD ST.	607,322.00	385,071.00
1201001 - N. PAULINA ST. FROM N. RODGERS AVE TO W. SHERWIN, W. SHERWIN FROM N.PAULINE TO N. SHERIDAN	940,428.00	1,051,597.00
1401110 - W. BERTEAU AVE FROM N. RAVENSWOOD AVE TO N. ASHLAND AVE	353,642.00	268,058.82
1301251 - S.WINCHESTER-W.37TH-W.38TH,W.37TH-S.DAMEN-S.WOLCOTT,W.38TH-S.DAMEN-S.WINCHESTER	507,662.00	330,022.00
1301178 - S. HARDING FROM W. ROOSEVELT TO W. 14TH ST.	384,144.00	278,287.94
1301151 - N.EAST CIRCLE-NORTHCOTT-HOBART,NICOLET-NICKERSON-N.EAST CIR.,THORNDALE-EAST CIRCLE-NEWARK	1,281,688.00	429,803.00
1001098 - W. 54TH ST. FROM S. MAPLEWOOD AVE TO S. WESTERN AVE, S.MAPLEWOOD FROM W.53RD ST TO W.54TH ST	674,064.00	407,478.00
1301189 - N. LAVERGNE AVE FROM W. MEDILL AVE TO W. ARMITAGE AVE	725,102.00	527,923.00
1201057 - S HARDING AVE FROM W 14TH ST TO W 16TH ST	393,204.00	245,920.00
1301267 - S2ND FROM S. PEORIA ST TO S. HALSTED ST	221,064.00	272,309.82
1301102 - E.61ST-130' WWL OF HARPER AVE-S.STONEY ISLAND, S.HARPER-E.PUBLIC WAY-E.61ST ST.	351,830.00	184,102.00
1401025 - S. PARKSIDE AVE. FROM W. 61ST ST. TO W. 63RD ST.	406,190.00	286,924.00
1301286 - N. CLAREMONT AVE, N. EAST DRIVE OF OAKLEY AVE, W. PALMER ST.	421,290.00	143,338.00
1301037 - E 100TH ST FROM S STATE ST TO S MICHIGAN AVE	285,390.00	201,540.00
1401206 - S EGGLESTON AVE FROM W 111TH ST TO W 115TH ST	789,428.00	327,971.00
1401034 - S. WOOD ST. FROM ALLEY N. OF 56TH ST. TO W. 58TH ST.	496,488.00	164,763.00
1301193 - N. WEST CIRCLE AVE FROM W. HOBART AVE TO N. NORTHCOTT AVE	886,370.00	107,962.00
1201047 - N.LA CROSSE- FULTON WEST END, LAMON WEST END ,W.FULTON LAVERNGE CICERO,FULTON KILPATRICK	1,192,900.00	411,251.00
1301136 - W. 38TH ST. FROM S. HALSTED ST. TO S. NORMAL AVE,S.WALLACE ST. FROM W 37TH ST TO W 39TH ST	573,196.00	134,316.00
1301163 - N.LAMON AVE FROM W.BELDEN TO W.DICKENS ,W.SHAKESPEARE FROM N.LAMON AVE TO N.CICERO	578,934.00	136,699.00
1301236 - W JARVIS AVE FROM N ASHLAND AVE TO N SHERIDAN RD	401,056.00	-
1301124 - S. WOODLAWN AVE FROM E. 91ST ST. TO E. 93RD ST.	432,162.00	139,174.00
1401126 - N. MONTICELLO AVE FROM W. WABANSIA AVE TO W. NORTH AVE	177,274.00	-
1401036 - S. CAMPBELL AVE FROM W. 56TH ST. TO W. 59TH ST.	591,920.00	9,006.00
1401032 - W. LITHUANIAN PLAZA CT.-S.ROCKWELL-S.WESTERN, S.ROCKWELL-MARQUETTE-W.LITHUANIAN PLAZA	854,962.00	-
1401074 - S. WALLACE ST. FROM W. 43RD ST. TO W. 44TH ST.	199,320.00	-
1401067 - S. BLACKSTONE AVE FROM E. 49TH ST. TO E. HYDE PARK BLVD.	400,754.00	-
1211012 - N. COMMONWEALTH AVE FROM DIVERSEY PKWY TO SURF ST	163,080.00	-
1401004 - S.WALLACE AVE, W.111TH S, TO 115TH	789,428.00	-
1301089 - N FRANCISCO AVE FROM W MONTROSE AVE TO W IRVING PARK RD	796,676.00	-
1301249 - S BURLEY AVE FROM E 132ND ST TO E 136TH ST	834,124.00	16,542.00
1301148 - E. 108TH FROM S. COTTAGE GROVE TO S. LANGLEY, S. CHAMPLAIN FROM E.107TH ST. TO E.108TH ST.	401,056.00	-
1001053 - N.SANGAMON-RANDOLPH TO ADAMS, PEORIA - RANDOLPH TO WASHINGTON	713,626.00	-
1301175 - W. 21ST ST. FROM S. LAFUN ST. TO S. RACINE AVE	643,562.00	-
1401127 - N. SAWYER AVE FROM W. BLOOMINGDALE AVE TO W. NORTH AVE	391,996.00	-
1401050 - S. MAJOR AVE FROM W. 61ST ST. TO W. 63RD ST.	412,230.00	-
1301271 - E.58TH-S.KIMBARK-S.BLACKSTONE, S.DORCHESTER-E.55TH PL-E.58TH ST.	826,574.00	-
1401215 - N SAINT LOUIS AVE FROM W PETERSON AVE TO W ARDMORE AVE	384,748.00	-
1301157 - W. 108TH ST FROM S. WENTWORTH AVE TO S. STATE ST.	431,860.00	-
1001101 - W 53RD ST, FROM S. PAULINA TO S.ASHLAND, S.MARSHFIELD FROM W.51ST ST TO W.53RD ST.	382,634.00	-

**2013 Water Capital Improvement Program**  
Estimated and Actual Expense as of 7/2/13

PROJECT	2013 ESTIMATED EXPENSE	2013 CALENDAR YEAR EXPENSE
1401020 - S PERRY-W 107TH-W 108TH, S LASALLE-W 107TH-W 108TH, S LAFAYETTE-W 107TH ST-W 108TH ST.	541,788.00	-
1401114 - N LECLAIRE FROM W BLOOMINGDALE TO W NORTH AVE, W. ST.PAUL FROM N.LECLAIRE TO N.CICERO	972,138.00	-
1201110 - S. HARVARD AVE FROM W. 122ND ST. TO W. 123RD ST.	179,086.00	-
1301303 - N. ROGERS FROM KENTON TO CALDWELL, KERCHEVAL FROM KERBS TO KENTON	384,144.00	-
0401043 - W. 123RD ST. FROM S. PARNELL AV TO S. WENTWORTH AV	763,154.00	-
1401103 - S. GREEN ST. FROM W. MADISON ST. TO W. JACKSON BLVD.	325,556.00	-
1301190 - S. THROOP ST. FROM W. 16TH ST TO W. 21ST ST.	602,490.00	-
1201152 - S. KIMBARK FROM E. 55TH ST TO E. 59TH ST.	587,994.00	-
1301137 - S.LEAVITT ST.-S.ARCH AVER-W.37TH ST, W.37TH ST-S.ARCHER AVE-S.LEAVITT ST	518,836.00	-
1401195 - W BERWYN AVE FROM N FOREST GLEN AVE TO N LAPORTE AVE	244,620.00	-
1401108 - N. HAMLIN AVE FROM W. CORNELIA AVE TO W. BELMONT AVE	628,764.00	-
1401309 - S. CALUMET AVE FROM E. 56TH ST TO E. 59TH ST	595,242.00	-
1401057 - S. YALE AVE. FROM W. 122ND ST. TO W. 123RD ST.	183,012.00	-
1301242 - W PALMER ST FROM N LONG AVE TO N LATROBE AVE	363,004.00	-
1401194 - BALMORAL - FOREST GLEN TO LAPORTE, FOREST GLEN - CATALPA TO 100' S OF BALMORAL	426,726.00	-
1301264 - N. LAWDALE FROM N. HAMLIN AVE TO N. MILWAUKEE	313,174.00	-
1401125 - N. CENTRAL PARK AVE FROM W. ARMITAGE AVE TO W. NORTH AVE	792,448.00	-
1301239 - LAMON - THOMAS TO AUGUSTA,CORTEZ - LAVERGNE TO CICERO, AUGUSTA - LAVERGNE TO CICERO	581,350.00	-
1401297 - N. MORGAN ST FROM W. WASHINGTON BLVD TO W. MADISON ST	133,786.00	-
1401199 - S SEELEY AVE FROM W 101ST PL TO W 103RD ST	348,508.00	-
1401207 - S HARVARD AVE FROM W 113TH ST TO W 115TH ST, S STEWART AVE FROM W 111TH ST TO W 115TH ST	1,220,080.00	-
1401181 - N SEELEY AVE FROM W IRVING PARK RD TO W GRACE ST	403,170.00	-
1401056 - S. PRINCETON AVE. FROM W. 122ND ST. TO W. 123RD ST.	177,576.00	-
1401318 - S. CARONDOLET AVE FROM E. 132ND ST TO E. 134TH ST	446,054.00	-
1401253 - SEELEY - 107TH ST TO 108TH PL, 108TH PL - HOYNE TO LONGWOOD	453,000.00	-
1401320 - MOFFAT FROM CAMPBELL TO WESTERN	177,878.00	-
1401198 - S HAMILTON AVE FROM W 105TH ST TO W 107TH ST	404,982.00	-
1401003 - W 116TH ST FROM PARNELL TO PRINCETON, EGGLESTON 115TH TO 119TH ST, 117TH NORMAL TO STEW	1,480,404.00	-
1301120 - W. 59TH ST. FROM 260 FT. WWL OF S. SHIELDS AVE TO S. WELLS ST.	290,826.00	-
1401314 - S. LAFLIN ST FROM W. 89TH ST TO W. 91ST	401,056.00	-
1401136 - S PARNELL AVE FROM W 115TH ST TO W 118TH ST	803,924.00	-
1401352 - 53RD ST - CALUMET TO MLK DRIVE	135,900.00	-
1401093 - S. ST. LOUIS FROM 500' N OF W. 23RD ST. TO W. 26TH ST.	785,200.00	-
1101034 - S. EMERALD AVE. FROM W. 26TH ST. TO W. 29TH ST.	291,606.12	390,063.47
1301168 - S. INDIANA AVE FROM E. 71ST ST. TO 350' SSL OF E. 74TH ST.	907,708.09	953,112.16
1301105 - N. BISSELL ST. FROM W. BELDEN AVE. TO W. ARMITAGE AVE.	740,056.94	647,545.36
1301103 - E. 74TH ST, S.ELLIS AVE, S. DREXEL AVE, S. INGLESIDE AVE	1,268,035.94	1,285,120.33
1301199 - S. HONORE ST. FROM W. 61ST ST. TO W. 63RD ST.	459,051.04	373,992.08
0101042 - W CATON ST FROM N LEAVITT ST TO N MILWAUKEE AVE	296,474.34	255,772.54
1301166 - N KENMORE-N.CLYBOURN-N.MAUD,N.MAUD-N.RACINE-N.SHEFFIELD,N.SEMINARY-W.ARMITAGE-MAUD	1,273,219.57	1,157,829.83
0601142 - N. AVERS AVE FROM W. WELLINGTON AVE. TO W. DIVERSEY AVE.	538,309.22	460,159.13
1301107 - N LEAVITT ST FROM W MONTROSE AVE TO W IRVING PARK RD	1,073,920.73	814,575.98
1301246 - S. ELIZABETH AVE. FROM ALLEY S OF W. GARFIELD BLVD. TO W. 57TH ST.	398,725.31	390,122.78
1301233 - S. THROOP ST. FROM ALLEY SOUTH OF W. GARFIELD BLVD. TO W. 57TH ST.	404,885.50	453,180.29
1301068 - W. 23RD ST. FROM S. MARSHALL BLVD. TO S. ROCKWELL ST.	963,858.18	1,000,021.65
1301075 - W. 35TH ST. FROM S. HOYNE AVE TO S. WOOD AVE	835,375.60	934,010.29
1301208 - S. ABERDEEN ST. FROM ALLEY S OF GARFIELD TO W. 59TH ST.	914,158.92	938,579.36
1201082 - S.HERMITAGE-ALLEY S OF W63RD-W.MARQUETTE,S.PAULINA-W.63RD-W.MARQUETTE,W.65-S.WOOD-S.F	1,805,099.36	1,560,021.41
1301253 - N. RICHMOND ST. FROM W. WILSON AVE TO W. MONTROSE AVE	544,567.34	445,240.48
1201029 - W. DICKENS AVE. FROM N. HAMLIN AVE. TO N. SPAULDING AVE.	1,150,801.02	1,081,071.84
1301198 - S. PAULINA ST. FROM W. 61ST ST. TO W. 63RD ST.	418,987.92	351,711.97
1301156 - S. CORLISS AVE FROM E. 104TH ST. TO E. 106TH ST.	545,841.88	458,924.04
1001062 - S. LAWDALE AVE. FROM W. DOUGLAS BLVD. TO W. 16TH ST.	496,511.37	591,941.26
1301220 - N. TROY ST FROM W. WILSON AVE TO W. MONTROSE AVE	514,604.96	487,278.51
1301033 - S.CALHOUN AVE-E.106TH ST.-E.109TH ST. , W.107TH ST.-S.BENSLEY AVE -S.HOXIE AVE,	691,583.51	467,238.28
1201013 - N. TROY ST.-51' NORTH OF W. BARRY AVE-W. DIVERSEY AVE, W. WELLINGTON-N.KEDZIE-N.TROY ST.	955,325.91	656,014.14
1301056 - S NORMAL AVE FROM W 115TH ST TO W 119TH ST	958,171.45	807,717.50
1301111 - N. SPAULDING AVE - W. HIRSCH TO W. POTOMAC, W. EVERGREEN-N. HOMAN TO N. KEDZIE AVE	651,994.90	442,847.87
1301114 - S. CHURCH FROM W.MONTREY TO W. 115TH, W. EDMAIRE FROM S.HERMOSA TO S.VINCENNES	878,461.94	842,469.37
1301082 - S MARQUETTE AVE FROM E 87TH ST TO E 89TH ST	489,886.02	446,483.40
1301098 - N FRANCISCO AVE FROM W ARMITAGE AVE TO W NORTH AVE	1,237,774.15	966,570.27
1201055 - W. GRENSHAW ST. FROM S. CAMPBELL AVE. TO S. WESTERN AVE.	278,755.71	210,721.53
1301197 - S. MUSKEGON AVE FROM E. 88TH ST TO E. 91ST ST	749,467.45	622,846.77
1301248 - S. CALUMET AVE FROM 175 FT SOUTH OF E. 113TH ST. TO E. 115TH ST.	501,434.01	437,936.57
1301092 - N SOUTHPORT AVE-W IRVING PARK RD-W ADDISON AVE, W WAVELAND AVE-N. SOUTHPORT AVE-N CLA	1,708,022.15	957,630.40



**2013 Water Capital Improvement Program**  
Estimated and Actual Expense as of 7/2/13

PROJECT	2013 ESTIMATED EXPENSE	2013 CALENDAR YEAR EXPENSE
1301213 - W. 32ND ST. FROM S. MORGAN ST. TO S. LITUANICA AVE	293,264.00	278,221.85
1301108 - N.HAMLIN-W.DIVERSEY-WRIGHTWOOD,N.RIDGEWAY-W.DIVERSEY-WRIGHTWOOD, SCHUBERT-HAMLIN-	1,041,034.00	799,390.66
1301256 - E. 77TH PL. FROM S. COLES AVE TO S. EXCHANGE AVE	205,400.45	164,972.58
1301229 - W. VAN BUREN AVE FROM S. KOLMAR AVE TO S. KOSTNER AVE	473,444.49	422,858.40
1301196 - E. 76TH PL. FROM S. EXCHANGE AVE TO S. COLES AVE	213,346.32	178,515.84
1301257 - W. GRANT PL FROM N. GENEVA TER TO N. CLARK ST	532,313.25	331,353.97
1301028 - E.111TH PL., E. 112TH ST., E. 113, S. COTTAGE GROVE, S. FORRESTVILLE AVE, S.ST LAWERENCE	533,610.60	491,237.26
0101073 - S.NORMAL AVE FROM W.32ND ST. TO W. 33RD ST., W.32ND ST FROM S. UNION AVE TO S. CANAL ST.	1,018,978.83	926,163.51
1301169 - N.SOUTHPORT AVE-W.WELLINGTON -W.DIVERSEY PKWY, W.WOLFRAM AVE-N.SOUTHPORT AVE-N.LAKW	829,721.20	506,143.00
1301215 - E. 98TH ST. FROM S. AVENUE M TO S. AVENUE H	458,523.01	418,050.48
1301158 - S. WINCHESTER AVE FROM W. 56TH ST. TO W. 59TH ST.	807,454.12	608,655.27
1301222 - W. COLUMNBIA AVE FROM N. GLENWOOD AVE TO N. SHERIDAN RD	514,869.17	416,601.14
1301258 - W. NORTH SHORE AVE FROM N. GLENWOOD AVE TO N. SHERIDAN RD.	506,962.61	332,029.93
1301129 - S. FOREST AVE FROM 220' SSL E. 113TH ST. TO E. 115TH ST.	478,443.39	333,910.70
1301146 - S. ELLIS AVE. FROM E. OAKWOOD BLVD. TO E. 41ST PL.	578,427.10	558,069.10
1301176 - N KENMORE AVE FROM W BELMONT AVE TO W WELLINGTON AVE	674,973.21	339,678.97
1301283 - S. STATE ST FROM S. ARCHER AVE TO E. CERMAK RD.	473,839.97	357,401.54
1301228 - N KARLOV AVE FROM N MILWAUKEE AVE TO W BELMONT AVE	592,675.33	441,896.43
1301147 - S. GREENWOOD AVE FROM E. HYDE PARK BLVD TO E. 53RD ST.	457,020.87	1,199,636.17
1301164 - N. LAWNDALE AVE FROM W. FULLERTON AVE TO W. DICKENS AVE	818,097.32	618,788.99
1301128 - S.ABERDEEN ST.-W.59TH ST.-W.60TH ST, W. 59TH ST.-S.ASHLAND AVE-S.MORGAN AVE	1,988,186.28	1,482,601.83
1301217 - W. WEBSTER FROM N. GENEVA TER TO N. CLARK ST.	672,463.37	317,630.37
1201024 - W. HARRISON ST. FROM S. LASALLE ST TO S. STATE ST.	380,871.21	246,511.03
1301125 - N. HOYNE AVE FROM W. WASHINGTON BLVD. TO W. MADISON ST.	190,375.01	130,046.47
1301094 - N LEAVITT ST FROM W WASHINGTON BLVD TO W MADISON ST	312,372.75	244,368.92
1301302 - MADISON - KOSTNER TO PULASKI	1,331,768.32	970,401.23
1201194 - W. 51ST ST. FROM S. WALLACE ST. TO S. SHIELDS AVE	741,027.86	494,751.21
1301087 - N SPRINGFIELD AVE FROM W CHICAGO AVE TO 481' SOUTH OF W FERDINAND ST	1,085,696.99	899,096.66
1301244 - S. CARPENTER ST. FROM W. 59TH ST. TO W. 61ST ST.	535,883.57	269,497.50
1301241 - W ROOSEVELT RD FROM S HOMAN AVE TO S ALBANY AVE	790,342.32	676,108.57
1301053 - S.HONROE:87TH-WINCHESTER,WOOD:W.87TH-89,WINCHESTER :87TH-89TH,W.89TH :S.WINCHESTER-	1,784,755.44	1,174,202.10
1301050 - W. HADDON AVE FROM N. HONORE ST. TO N. WOOD ST., W.HADDON AVE FROM N.WOOD ST. TO N.ASH	632,561.39	428,109.97
1301149 - S. STATE ST. FROM E. GARFIELD BLVD. TO E. 59TH ST.	1,239,953.07	589,708.23
0501311 - S.HOMAN AVE FROM W.MADISON ST. TO W.JACKSON BLVD,W.ADAMS ST. FROM S. HOMAN TO S. SPAU	798,349.71	484,011.26
1301255 - 77TH ST - EXCHANGE TO 200' E SOUTH SHORE, SOUTH SHORE - 71ST ST TO CHELTENHAM	960,459.13	133,739.16
1301195 - E.92ND ST-200' W OF S. BRANDON-S.BRANDON,S.BRANDON-E.90TH ST-E.93RD ST.	902,882.17	461,856.17
1301282 - N KEYSTONE-W.BYRON-W.GRACE,W.GRACE-N.KEDVALE-N.PULASKI,N.KEDVALE-W.GRACE-WAVELAND	997,415.12	-
1301226 - W ERIE ST FROM N CICERO AVE TO N KENTON AVE, N. KILPATRICK FROM HURON TO OHIO	529,469.09	290,981.80
1301288 - W. CORTLAND ST. FROM N. KIMBALL AVE TO N. SPAULDING	162,398.86	-
1301036 - HOUSTON-87TH ST-89TH ST,89TH ST-COMMERCIAL-BALTIMORE,88TH ST-HOUSTON-BALTIMORE	526,123.62	262,231.89
1301234 - S. CARPENTER FROM ALLEY SOUTH OF GARFIELD BLVD TO W. 59TH ST.	1,241,061.29	188,129.20
1301144 - S. DREXEL AVE. FROM E. 65TH ST. TO E. 67TH ST.	586,976.65	-
1301304 - WOLCOTT FROM POTOMAC TO DIVISION	287,402.23	134,939.18
1301172 - S. GREENWOOD AVE FROM E. 43RD ST. TO E.47TH ST.	1,305,803.43	-
1301122 - N. DAMEN AVE FROM W. PRATT BLVD. TO W. DEVON AVE	1,147,304.96	33,318.47
1301305 - HONORE FROM ELLEN TO DIVISION	306,195.43	3,353.28
1301096 - N.SHEFFIELD-W.FULLERTON -ARMITAGE, DICKENS-SHEFFIELD-FREEMONT, WEBSTER-SHEFFIELD-FREEMO	1,626,319.52	-
1301135 - S. SPAULDING AVE FROM W. 59TH ST. TO W. 61ST ST.	626,248.73	-
1301270 - W. GLADYS AVE FROM S. LOCKWOOD AVE TO S. LARAMIE AVE	290,562.42	-
1301118 - W. WABANSIA AVE FROM N. MONTICELLO AVE TO N. SAWYER AVE	936,877.83	14,903.21
1301159 - KARLOV - JACKSON TO GLADYS, JACKSON - KOLMAR TO PULASKI, KEELER - JACKSON TO GLADYS	1,726,971.30	774,825.88
1401140 - W 50TH ST FROM S HALSTED ST TO S UNION AVE	370,894.63	-
1301083 - S.PERRY-S.VINCENNES-W.74TH,W.72ND-S.VINCENNES-S.LAFAYETTE,W.74TH-S.VINCENNES-S.LAFAYETTE	1,434,075.26	433,915.60
1401188 - N BOSWORTH AVE FROM W JONQUIL TER TO W HOWARD ST	302,020.73	-
1301119 - E 87TH ST FROM S COLFAX AVE TO S COMMERCIAL AVE	1,260,321.14	768,288.72
1301273 - E. 70TH PL. FROM S.PAXTON AVE TO S. SOUTH SHORE DR.	486,442.42	-
1301237 - W DOUGLAS BLVD FROM S RIDGEWAY AVE TO S HOMAN AVE	1,070,883.17	-
1401066 - W 38TH PL. FROM S. KEDZIE TO S. SACRAMENTO, S.ALBANY FROM W. 37TH PL. TO W. PERSHING RD.	941,047.73	-
1301285 - E.103RD ST., S.COMMERCIAL ST.,S.EXCHANGE AVE, S.MUSKEGON AVE	1,651,505.47	783,365.59
1401141 - W 50TH PL FROM S HALSTED ST TO S UNION AVE	265,843.20	-
1401138 - N TRIPP AVE FROM W IOWA ST TO W CHICAGO AVE	232,302.62	-
1301127 - S. LOOMIS ST. FROM W. HARRISON ST. TO W. ROOSEVELT RD.	1,243,461.00	509,900.23
1301154 - E. 71ST ST-S. YATES BLVD-S. SOUTH SHORE DR., S.COLES-E. 71ST ST.-76TH ST., 73RD - EXCHAN	1,908,444.09	-
1401119 - N CENTRAL PARK AVE FROM W DIVERSEY AVE TO W FULLERTON AVE	1,099,469.28	-
1301132 - S. MORGAN ST. FROM W.75TH ST. TO W. 79TH ST.	1,112,186.04	-

**2013 Water Capital Improvement Program**  
Estimated and Actual Expense as of 7/2/13

PROJECT	2013 ESTIMATED EXPENSE	2013 CALENDAR YEAR EXPENSE
1401094 - S. TRIPP AVE FROM W. ROOSEVELT RD. TO W. 14TH ST.	526,825.88	-
1401107 - W. NEWPORT AVE FROM N. KEDVALE AVE TO 120' W OF N. PULASKI RD.	413,226.53	-
1401142 - S. MAPLEWOOD AVE FROM W 47TH ST TO W 48TH ST	269,396.04	-
1401037 - E. 65TH ST FROM S. VERNON AVE TO S. ST. LAWRENCE AVE.	383,306.87	-
1401062 - W. 38TH ST. FROM S. WOOD ST. TO S. ASHLAND AVE, S. WOOD ST FROM W. 37TH ST. TO W. 39TH ST.	1,079,131.70	-
1301306 - W. SCHUBERT AVE FROM N. HALSTED ST TO N. CLARK ST	473,658.42	-
1301252 - N. PAULINA ST. FROM W. FULTON ST. TO W. LAKE ST.	291,858.34	-
1401186 - W BALMORAL AVE FROM N RAVENSWOOD AVE TO N ASHLAND AVE	544,282.64	-
1401049 - S. MICHIGAN AVE FROM E. GARFIELD BLVD TO E. 59TH ST.	1,169,295.89	-
1401022 - W. 99TH ST.-S. THROOP ST-S. VINCENNES AVE, S. THROOP ST.-W. 99TH ST.-W. 100TH PL.	634,150.04	-
1401130 - N KOLIN AVE FROM W IOWA ST TO W CHICAGO AVE	251,351.77	-
1401048 - S WOOD ST - W 63RD ST TO W MARQUETTE RD. W 65TH ST - S WOLCOTT AVE TO S WOOD ST	1,037,046.24	-
1401143 - W 42ND ST FROM S KEDZIE AVE TO S SACRAMENTO AVE	522,475.22	-
1401073 - S EVANS AVE FROM E 43RD ST TO E 44TH ST	244,372.82	-
1401101 - W. WILCOX ST FROM S. SACRAMENTO AVE TO S. CALIFORNIA AVE	546,927.75	-
1301138 - N.WOLCOTT-W.CARROLL-W.LAKE,N.WOOD-W.LAKE-W.CARROLL,W.CARROLL-N.LEAVITT-WOOD	2,003,791.79	229,275.96
1301281 - S. PRINCETON AVE FROM W. 23RD ST. TO W. 24TH PL, W. 24TH PL. FROM S STEWART TO S WENTWORTH	1,041,377.16	-
1301307 - W. WRIGHTWOOD AVE FROM N. HALSTED TO N. CLARK	813,638.51	-
0901133 - S. BALTIMORE AVE. FROM E. 89TH ST. TO E. 92ND ST.	1,005,135.35	-
1401068 - S. WOOD ST. FROM W. 51ST ST. TO W. 53RD ST.	482,472.19	-
1401033 - S. CALIFORNIA AVE FROM W. 71ST ST. TO W. 73RD ST.	589,605.00	-
1401058 - S. BUFFALO AVE FROM 300' NNE E. 83RD ST. TO E. 86TH ST.	869,364.21	-
1301205 - N. GREENVIEW-W.THOME-W.GRANVILLE, W.GRANVILLE AVE-N.CLARK-N.GLENWOOD	669,014.00	-
1301133 - E.111TH-S.VERNON-S.EBERHART,E.113TH-S.MLK DR-S.FRONT,S.VERNON AVE-E.111TH ST.-E.113TH ST.	939,121.70	-
1301299 - W GREGORY ST FROM N CLARK ST TO N GLENWOOD AVE	352,578.96	-
1401063 - W. GRENSHAW ST. FROM S. SPRINGFIELD AVE TO S. INDEPENDENCE BLVD	311,869.37	-
1401185 - W. BERWYN AVE. FROM N. RAVENSWOOD AVE. TO N. ASHLAND AVE.	534,777.04	-
1401064 - W. FILLMORE ST. FROM S. PULASKI AVE TO S. INDEPENDENCE BLVD	578,285.62	-
1401047 - S MARSHFIELD AVE - W 65TH ST TO W MARQUETTE RD, W 65TH ST - S PAULINA ST TO S ASHLAND AVE	629,736.12	-
1401106 - N. TRUMBULL AVE FROM W. HURON ST. TO W. FRANKLIN BLVD.	485,580.06	-
1401083 - W. ARDMORE AVE FROM N. BROADWAY TO N. WINTHROP AVE	234,115.54	-
1401099 - N. LOREL AVE FROM W. CHICAGO TO W. OHIO ST.	658,105.39	-
1401035 - S. PEORIA ST FROM W. 57TH ST TO W.60TH ST, W. 57TH ST. FROM S. RACINE AVE. TO S. HALSTED	1,522,962.31	-
1401084 - N. SHERIDAN RD. FROM W. SHERIDAN RD TO W. THORNDALE AVE	929,005.00	-
1401144 - W 42ND PL FROM S KEDZIE AVE TO S ALBANY AV	270,163.63	-
1401091 - W. 25TH ST. FROM S. KOSTNER AVE TO S. KEELER AVE	576,673.41	-
1401071 - S.CAMPBELL FROM W 47TH ST. TO W 48TH ST, W.47TH FROM S.CAMPBELL TO WESTERN	568,797.30	-
1201048 - FULTON AVE FROM CENTRAL PARK AVE TO KEDZIE AVE, HOMAN AVE FROM FRANKLIN BLVD TO FULTON	1,701,262.53	-
1401028 - W. 71ST ST. FROM S. ASHLAND AVE TO S. RACINE AVE	1,238,033.12	-
1401115 - W.DEMING-N.KENTON-N.KOSTNER, MONTANA-KENTON-KOSTNER, KILBOURN-DEMING-FULLERTON	1,576,068.46	-
1401179 - W. LEMOYNE FROM N. KEATING TO N. KILPATRICK,	458,921.29	-
1401173 - N BROADWAY FROM W BALMORAL AVE TO W FOSTER AVE	594,601.77	-
1401082 - W 49TH PL FROM S HALSTED ST TO UNION AVE	280,693.84	-
1201156 - S. MAY ST FROM W. ROOSEVELT RD TO W. VERNON PARK PL.	833,378.36	-
1301300 - N KENMORE FROM W FULLERTON TO W BELDEN, W BELDEN FROM N KENMORE TO N FREMONT	743,012.29	-
1401180 - S SPRINGFIELD A FROM W 24TH ST TO W 26TH ST	544,825.00	-
1401092 - S. ST. LOUIS AVE FROM W. 26TH ST. TO W. 31ST ST.	1,155,243.24	-
1301268 - N. WALLER AVE FROM W. NORTH AVE TO W. DIVISION ST.	1,073,586.38	-
1401075 - S. WABASH AVE FROM E. 43RD ST. TO E. 47TH ST, E. 46TH ST. FROM S. STATE ST. TO S. INDIANA	1,280,580.81	-
1401090 - S. KARLOV FROM W.24TH ST. TO W.24TH PL, W. 24TH PL FROM S. KILDARE TO S.PULASKI RD.	809,190.68	-
0701002 - MORGAN - 57TH ST TO 60TH ST	944,117.27	-
1401026 - S. WINCHESTER AVE FROM W. 69TH ST. TO W. 71ST ST.	623,563.14	-
0801034 - N. FREMONT ST. FROM W. BELDEN AVE TO W. ARMITAGE AVE.	789,853.43	-
1401081 - W 41ST PL FROM SKEDZIE AVE TO SSACRAMENTO AVE	584,488.26	-
1401054 - W. 33RD PL. FROM S. MORGAN ST. TO S. HALSTED ST.	552,526.50	-
1401040 - S. ELLIS ST. FROM E. 65TH ST. TO E. 67TH ST.	628,779.26	-
1301287 - W. BARRY FROM N. KENMORE TO ALLEY WEST OF N. CLARK	599,223.90	-
1401089 - W. 28TH ST. FROM S. KEDVALE TO S. KARLOV, S. KARLOV FROM W.26TH ST. TO W. 31TH ST.	1,237,420.12	-
1401118 - N.RIDGEWAY-W.FULLERTON-W.BELDEN,BELDEN-HAMLIN-LAWNDALE, LYNDALE-HAMLIN-LAWNDALE,HA	1,277,497.65	-
1401085 - W. BRYN MAWR AVE FROM N. GLENWOOD AVE TO N. KENMORE AVE	1,064,489.30	-
1301301 - N PULASKI RD FROM W WILSON AVE E TO N ELSTON AVE	1,091,691.93	-
1401098 - N. LEAMINGTON AVE FROM W. CHICAGO TO W. OHIO ST.	602,776.37	-
1401072 - S.SACRAMENTO AVE FROM W. 43RD ST. TO W. 47TH ST.	1,149,362.82	-
1401117 - W.MCCLEAN-N.HAMLIN-400' E OF N. LAWNDALE, N.HAMLIN-W.PALMER-W.ARMITAGE	1,084,504.47	-
1401172 - W GREGORY ST FROM ALLEY E OR N RAVENSWOOD AVE TO N ASHLAND AVE	475,262.28	-

**2013 Water Capital Improvement Program**  
Estimated and Actual Expense as of 7/2/13

PROJECT	2013 ESTIMATED EXPENSE	2013 CALENDAR YEAR EXPENSE
1401044 - S. CORNELL AVE. FROM E. 69TH ST. TO E. 71ST ST.	618,821.21	-
1401288 - WEST END FROM AUSTIN AVE TO CENTRAL AVE	1,240,455.28	-
1401187 - W MORSE FROM N WESTERN TO N RIDGE, N HAMILTON FROM 200' SSL OF W LUNT TO W MORSE ,	1,351,663.04	-
1401087 - S. ABERDEEN ST FROM W 51ST ST. TO W. 53RD ST., W. 52ND ST FROM S.ABERDEEN TO S.CARPENTER	697,376.00	-
1301280 - N.CARPENTER CHICAGO - MILWAUKEE FROM ERIE TO OGDEN, MORGAN FROM MILWAUKEE - ERIE	1,131,031.09	-
1401139 - S LANGLEY AVE FROM E 42ND AVE TO E 44TH ST	555,285.64	-
1301298 - E PEARSON ST FROM N STATE ST TO N MICHIGAN AVE W	397,244.69	-
1001111 - W 70TH PL FROM S HAMILTON AVE TO S DAMEN AVE, S HOYNE AVE FROM W 70TH PL TO W 71ST ST	461,389.30	-
1201004 - N MAGNOLIA-ELMDALE-RIDGE, W THORNDALE-GREENVIEW-BROADWAY, W ROSEDALE-GLENWOOD-MA	2,460,101.00	-
1401137 - N ST LOUIS AVE FROM W FRANKLIN BLVD S TO W CARROLL AVE	1,297,525.66	-
1001088 - E.33RD ST-S STATE-MLK JR DR,S.CALUMET-E 31ST ST-E 33RD , E.32ND ST-S.MICHIGAN-S.MLK JR DR.	2,439,508.42	-
1401176 - N WOLCOTT AVE FROM W LUNT AVE TO W MORSE AVE	149,090.02	-
1401053 - S. HONORE ST. FROM W. 69TH ST. TO W. 71ST ST.	615,501.87	-
1301293 - W WALTON ST FROM N CLARK ST TO N DEARBORN ST	165,018.56	-
1301139 - S.CANAL ST FROM W. 31ST ST TO W 33RD ST, W. 32ND ST FROM S.CANAL ST. TO S.PRINCETON AVE	1,036,039.22	-
1201114 - W. HUTCHINSON ST. FROM N. LINCOLN AVE. TO N. DAMEN AVE.	341,207.01	-
1401121 - N. KEYSTONE AVE FROM W. ARMITAGE AVE TO W. NORTH AVE	1,175,295.97	-
1401321 - BLOOMINGDALE FROM CAMPBELL TO WESTERN	279,637.82	-
1001086 - S. WALLACE ST. FROM W. 31ST ST. TO W. 33RD ST.	559,208.38	-
1401213 - N LUNA AVE FROM W CORTLAND ST TO W NORTH AVE	797,603.33	-
1401214 - N HARDING AVE FROM 470' N OF W ARGYLE ST TO W AINSLIE ST	520,334.57	-
1401135 - S CHAMPLAIN AVE FROM E 65TH ST TO E 67TH ST	606,018.02	-
1301200 - W. 31ST ST. FROM S. THROOP ST. TO HALSTED, W. 31ST ST. FROM S. HASLTED ST. TO S. CANAL ST.	1,484,975.02	-
1401183 - W. BERTEAU AVE. FROM N. BELL AVE. TO N. DAMEN AVE.	761,238.80	-
1301308 - W. BLOOMINGDALE AVE FROM N. KEDZIE TO N. ALBANY	258,301.82	-
1301289 - W SUPERIOR ST FROM N LASALLE DR TO N DEARBORN ST	441,649.68	-
1301290 - W. HURON ST. FROM N. LA SALLE ST. - DEARBORN ST., ERIE LASALLE TO DEARBORN, DEARBORN SUPERI	1,240,939.59	-
1401052 - S. WOLCOTT AVE FROM W. 69TH ST. TO W. 71ST ST.	614,079.29	-
1401029 - S. CARPENTER ST. FROM W. 71ST ST. TO W. 74TH ST.	908,078.64	-
1301296 - W WAVELAND AVE FROM N KEDVALE TO N PULASKI RD, N KEDVALE FROM W WAVELAND TOW ADDISON	734,781.11	-
1401006 - S. WOOD ST. FROM W. 99TH ST. TO W. 101ST PL.	500,078.10	-
1301116 - S. ESCANABA AVE FROM E. 95TH ST. TO E. 98TH ST.	831,062.00	-
1201192 - S. EXCHANGE AVE FROM S. SOUTH CHICAGO AVE TO S. ANTHONY AVE	281,866.83	-
1401313 - S. LOWE AVE FROM W. 89TH ST TO W. 91ST	536,524.47	-
1201193 - W. 80TH ST. FROM S. LOWE AVE TO S. WALLACE ST.	131,214.69	-
1401009 - S. STEWART AVE FROM W. 119TH ST. TO W.123RD ST.	1,116,276.03	-
1401012 - S. MACKINAW AVE FROM 300'>NNL E. 83RD ST. TO E. 86TH ST.	984,017.02	-
1401317 - S. CALHOUN AVE FROM E. 103RD ST TO E. 106TH ST	808,177.07	-
1201098 - S. DANTE AVE FROM E. 89TH ST. TO E. 92ND ST.	844,623.44	-
1301150 - N. FRANCISCO AVE. FROM W. WILSON AVE. TO W. MONTROSE AVE.	453,823.74	392,909.59
1301097 - S. WASHTENAW AVE. FROM W. 24TH ST. TO W. 25TH ST.	182,212.43	177,045.05
1301048 - W. 32ND ST. FROM S. RACINE AVE. TO S. MORGAN ST.	333,014.99	245,259.77
1301091 - N CHRISTIANA - W ARGYLE TO W LAWRENCE, W ARGYLE-125' WWL OF N CHRISTIANA TO N CHRISTIANA	516,783.01	483,867.94
1301106 - N. TROY ST. FROM W. ARGYLE ST. TO W. LAWRENCE AVE.	490,720.29	419,421.46
1301085 - N. SACRAMENTO AVE. FROM W. IRVING PARK RD. TO W. WAVELAND AVE	458,116.81	207,633.75
0101027 - W NELSON ST FROM N SOUTHPORT AVE TO N RACINE AVE	573,612.58	526,084.08
1301100 - N.KIMBALL AVE FROM W.ARMITAGE AVE TO W. NORTH AVE	1,167,706.72	948,803.64
1301052 - S. VERNON AVE FROM E. 63RD ST. TO E. 65TH ST.	441,332.78	416,831.96
1301110 - S. HONORE ST. FROM W. 63RD ST. TO W. 65TH ST.	421,773.96	366,467.32
1301080 - W. BELDEN AVE. FROM N. CENTRAL PARK AVE. TO N. SPAULDING AVE.	361,443.87	372,071.03
1301039 - S. ST. LOUIS AVE-W. 60TH ST.-W. 60TH PL., W. 60TH ST.-S.CENTRAL PARK AVE-S.SPAULDING AVE	702,610.83	682,030.65
1301065 - S. HAMILTON AVE. FROM S. ARCHER AVE. TO W. 37TH ST.	185,298.73	155,456.05
1301064 - N. HAMLIN AVE FROM W. NORTH AVE. TO W. GRAND AVE.	219,948.31	180,818.99
1301142 - N. KENMORE AVE. FROM W. BYRON ST. TO W. WAVELAND AVE.	306,841.37	231,661.29
1301145 - W. LAWRENCE AVE FROM N. LEAVITT ST. TO 60' WWL OF N. CLARK ST.	1,700,889.35	1,568,604.16
1201096 - S.HARVARD-280'NNL OF W.88TH-260'SSL OF W.88,S.HOLLAND-W.88TH-S.YALE,S.YALE-S.HOLLAND-W.	245,686.44	157,987.31
1301054 - E. 96TH ST. FROM S. ESCANABA AVE. TO S. COMMERCIAL AVE.	96,086.88	135,434.58
1301072 - S. FAIRFIELD AVE. FROM W. 45TH ST. TO W. 47TH ST.	244,720.30	236,989.59
1301071 - S. ABERDEEN ST. FROM W. 76TH ST. TO W. 79TH ST.	578,942.69	523,260.07
1001107 - S. WOLCOTT AVE. FROM W. 65TH ST. TO W. MARQUETTE RD.	351,562.19	285,452.31
1301167 - S. BLACKSTONE AVE FROM E. 73RD ST. TO E. 74TH ST.	260,634.60	269,803.57
1001005 - W. WINNEMAC AVE. FROM N. RAVENSWOOD AVE (WEST) TO N. ASHLAND AVE.	464,522.52	283,150.23
1201015 - N. SOUTHPORT AVE. FROM W. BELMONT AVE. TO W. WELLINGTON AVE.	314,577.08	132,000.95
0401305 - W. LAKE ST. FROM N. ABERDEEN ST. TO N. GREEN ST.	-	9,418.03
Televised Sewer Inspections / Waste Characterization Analysis	415,149.11	65,484.29

**2013 Water Capital Improvement Program**  
Estimated and Actual Expense as of 7/2/13

PROJECT	2013 ESTIMATED EXPENSE	2013 CALENDAR YEAR EXPENSE
Restoration	36,779,974.53	9,933,387.42
Retention / Punchlist for Distribution (water main, feeder main, restoration)	5,822,190.87	89,152.09
Small projects for BOD (water main testing, security improvements)	1,321,050.34	-
MeterSave	26,873,541.47	8,857,190.28
BES Consulting Services	27,298,391.11	11,677,376.24
JOC Capital Construction at the Pumping Stations	1,695,629.16	210,173.53
Water Main Support Services	6,902,458.40	1,213,548.69
JOC Capital Construction at SWPP / JWPP	3,340,369.23	306,832.78
SCADA Maintenance and Enhancements	500,000.00	-
Paging System Improvements	2,799,879.75	1,140,229.75
Chemical Tank Rehabilitation	2,481,998.19	514,666.96
Paving and Lighting at SWPP / JWPP	750,000.00	-
Crib Restoration	424,000.00	16,282.08
Switchgear Replacement at SWPP	2,615,000.00	256,249.00
Facade and Brickwork - Central Park PS / SWPP	327,511.54	121,633.89
Retention at JWPP and SWPP (Upper Roadway, Admin Bldg Roof)	551,734.29	8,189.33
Small projects at JWPP / SWPP (Settling Basins, Washwater Drains, Filters)	5,984,049.06	444,935.41
Small projects at the Pumping Stations	1,897,397.00	-
Rebuild / Repair Pumps, Drives & Turbines	3,630,483.92	657,538.42
Inspections and Studies	1,181,539.56	84,182.60
Electrical Improvements at JWPP / SWPP	1,746,142.13	29,986.00
Elevator Equipment	1,395,645.18	57,345.46
East Filter Building Roof Replacement	20,375,020.57	5,305,400.25
Electrical and Control Improvements at TJPS	336,807.96	-
Variable Frequency Drives at RL/SW PS	2,950,476.40	1,617,828.41
Springfield PS Conversion	39,584,742.08	21,682,207.08
Full Replacement of Filter Controls at SWPP	500,000.00	-
Medium Power Voltage Distribution Improvements	1,000,000.00	-
Laboratory Upgrades at JWPP	406,000.00	-
Central Park PS Conversion	1,100,000.00	-
Retention for Pumping Station Projects (68th St PS projects, SCADA)	427,256.44	-
<b>Total</b>	<b>451,149,260.49</b>	<b>159,879,492.59</b>

---

## APPENDIX B

---

### B. Budgeted v. Actual Transfer-Ins & Expenditures

Please Note: DWM relies on data through June 30, 2013. The financial data is based upon raw data and has not been audited.



CITY OF CHICAGO  
DEPARTMENT OF WATER MANAGEMENT

DRAFT

**2013**

**Transfers-In Breakdown**

Capital project reimbursement	\$	10,500,000
Sewer reimbursement	\$	8,000,000
<b>TOTAL</b>	<b>\$</b>	<b>18,500,000</b>

2013 Budgeted/Actual expenditures from January 1 thru June 30, 2013

PRELIMINARY NUMBERS SUBJECT TO CHANGE				
APPR		BUDGETED 100%	BASED ON APPR ACTUAL	AVAILABLE BALANCE @100%
0005	Salaries & Wages	\$ 131,095,151.00	\$ 54,117,497.60	\$ 76,977,653.40
0020	Overtime	5,482,551.00	6,139,015.00	(656,464.00)
0026	Sick relief	5,000.00		5,000.00
0029	For Health Maintenance Org.	5,558,750.00	2,779,375.00	2,779,375.00
0039	Student Trainees	96,150.00		96,150.00
0042	Medical Premiums	12,229,221.00	6,114,610.50	6,114,610.50
0045	Term Life Insurance	171,557.00	85,778.50	85,778.50
0049	Workmen's Compensation	10,029,049.00	4,868,267.82	5,160,781.18
0051	Unemployment Insurance Claims	599,375.00		599,375.00
0052	Cost of Claims & Administrative	5,185,936.00	2,592,968.00	2,592,968.00
0056	Dental Plan	723,509.00	361,754.50	361,754.50
0070	Tuition Reimbursement	40,000.00		40,000.00
0091	Uniform Allowance		778.68	(778.68)
0121	Investigation Cost - Fin. Comm	585,000.00	134,479.64	450,520.36
0125	Office & Building Services	404,300.00	90,737.24	313,562.76
0130	Postage	1,174,875.00	315,312.69	859,562.31
0138	Prof. & Tech. Serv. - Computer Related	2,050,584.00	867,277.40	1,183,306.60
0139	Prof. services - IT development	1,335,000.00	15,930.00	1,319,070.00
0140	Professional & Technical Services	21,528,358.00	5,936,768.67	15,591,589.33
0141	Appraisals	1,000.00	235.00	765.00
0142	Accounting & Auditing	482,500.00		482,500.00
0143	Court Reporting	54,140.00	10,299.80	43,840.20
0144	Engineering & Architecture	1,500,000.00	479,526.93	1,020,473.07
0145	Legal Expenses	11,735.00	5,514.00	6,221.00
0147	Surveys	427,000.00	19,614.32	407,385.68
0148	Testing & Inspecting	163,000.00	17,362.70	145,637.30
0149	Purchases, License & Maintenance Software	635,933.00	7,444.00	628,489.00
0150	Publications Outside Agencies	97,335.00	204.00	97,131.00
0154	Rent/Maint. - Computer Hardware	494,215.00	27,865.92	466,349.08
0155	Rental of Property	387,759.00	253,560.00	134,199.00
0157	Rental of Equipment & Services	1,279,394.00	319,203.29	960,190.71
0159	Lease Purchase of Equipment	11,961.00	2,443.18	9,517.82
0160	Repair or Maintenance of Property	2,389,672.00	448,829.88	1,940,842.12
0161	Operation, Repair, Maintenance of Facilities	45,000.00		45,000.00
0162	Repair or Maintenance of Equipment	6,250,384.00	62,203.42	6,188,180.58
0166	Dues, Subscription, Memberships	42,929.00	7,463.41	35,465.59
0168	Educational Dev through cooperative education prog	21,125.00	460.00	20,665.00
0169	Technical & Meeting Costs	174,035.00	7,355.26	166,679.74
0172	Insurance Premium	1,000,000.00	1,000,000.00	-
0176	Maint/Operation of City Owned Vehicle	221,000.00	46,385.21	174,614.79
0178	Freight & Express Charges	771.00	254.02	516.98
0179	Messenger services	495.00	133.83	361.17

0181	Telephone - Mobile & Portable	349,708.00	84,229.36	265,478.64
0185	Waste Disposal Services	2,942,710.00	1,042,623.23	1,900,086.77
0186	Telephone - Equipment & Lease	6,000.00		6,000.00
0188	Telegraph	432,237.00	221,508.73	210,728.27
0189	Telephone - Non-Centrex	49,075.00	13,173.49	35,901.51
0190	Telephone - Centrex	285,038.00	91,346.70	193,691.30
0191	Telephone - Relocation	5,000.00	300.00	4,700.00
0196	Telephone - Circuits	752,423.00	263,997.15	488,425.85
0197	Telephone - Equipment Maintenance	71,518.00	42,733.75	28,784.25
0229	Transportation & Expense Allowance	254,469.00	49,648.38	204,820.62
0245	Reimbursement to Travelers	48,431.00	8,118.14	40,312.86
0270	Local Transportation	4,492.00	1,094.44	3,397.56
0312	Software purchases	34,982.00		34,982.00
0313	Cleaning & sanitation supplies	4,000.00	471.28	3,528.74
0314	Fuel Oil	350,000.00	160,904.05	189,095.95
0315	Diesel Fuel	2,345,000.00	261,084.09	2,083,915.91
0316	Gas-Bottled and Propane	261,448.00	74,262.44	187,185.56
0320	Gasoline	402,382.00	246,882.54	155,499.46
0322	Natural Gas	12,877,033.00	2,358,683.84	10,518,349.16
0331	Electricity	13,038,079.00	3,061,036.34	9,977,042.66
0338	License, Stickers, Tags & Plates	3,090.00		3,090.00
0340	Materials & Supplies	3,403,338.00	812,723.80	2,590,614.20
0342	Drug, Med. & Chem. Material & Supply	17,489,610.00	3,565,128.98	13,924,481.02
0345	Apparatus & Instruments	361,545.00		361,545.00
0348	Books & Related Materials	25,212.00	1,372.85	23,839.15
0350	Stationary & Office Supplies	185,889.00	(22,203.09)	208,092.09
0360	Repair, Parts & Materials	7,583,131.00	2,009,948.65	5,573,182.35
0362	Paint Supply	31,827.00	(890.00)	32,717.00
0401	Tools, <\$100/unit	32,244.00	7,023.43	25,220.57
0410	Equipment for Building	200,000.00	3,116.12	196,883.88
0422	Office Machines	1,236.00		1,236.00
0423	Communications devices	12,730.00		12,730.00
0424	Furniture & Furnishings	78,670.00	3,494.93	75,175.07
0440	Machinery & Equipment	1,280,639.00	432,102.21	848,536.79
0445	Technical & Scientific Equipment	766,000.00	20,807.59	745,192.41
0446	Purchases - Computer Hardware	297,920.00	35,293.60	262,626.40
0450	Vehicles	35,000.00		35,000.00
0521	Maintenance & Construction	2,946,315.00	850,804.16	2,095,510.84
0700	Contingencies - Prior Appropriations Req.	5,434.00	2,717.00	2,717.00
0902	Interest on Bonds	120,833,000.00	50,807,861.08	70,025,138.92
0905	MSD Use Charges	13,000,000.00	2,332,581.56	10,667,418.44
0908	Bond Redemption & Certificate of Indebtedness	42,589,000.00	5,577,327.40	37,011,672.60
0931	Court Settlement	1,022,460.00	549,628.91	472,831.09
0934	Claims for damage & liability	15,000.00		15,000.00
0952	Miscellaneous Claims	475,000.00	220,513.97	254,486.03
0958	Payment of certificates	222,000.00	13,800.00	208,200.00
0959	Cost incidental to issuing water revenue bonds	87,000.00		87,000.00
9027	Social Security	39,979.00	19,989.50	19,989.50
9076	Medicare	1,695,644.00	847,822.00	847,822.00
9097	For capital construction	84,887,524.00	21,000,000.00	63,887,524.00
9165	For expenses related to the data center	150,657.00	69,246.12	81,410.88
9375	For transfer to water rate stabilization account	13,500,000.00		13,500,000.00
9438	For services provided by general services - Publicati	593,203.00	71,187.62	522,015.38
9457	For services provided by dept of police	1,387,076.00		1,387,076.00
9458	For services provided by OEMC	100,000.00	11,456.00	88,544.00
9481	For services provided by dept of streets & sanitation	367,919.00	6,630.00	361,289.00
9484	For services provided by dept of transportation	235,000.00		235,000.00
9610	Pension Contributions	12,980,334.00	6,490,164.00	6,490,170.00
9611	Payment for Municipal Services	55,488,600.00	27,744,300.00	27,744,300.00

TOTAL

\$ 632,909,000.00 \$ 218,602,955.73 \$ 414,306,044.27