



MANAGER'S REPORT FOR JUNE 5, 2015 GENERAL INFORMATION AND RESPONSES TO MAYOR & COMMISSIONER REQUESTS

Places to be this Week...

The next Village Council meeting will be held on **June 9 at 7:00 p.m. in the Council Chambers** at Village Hall.

Future Calendar Reminders...

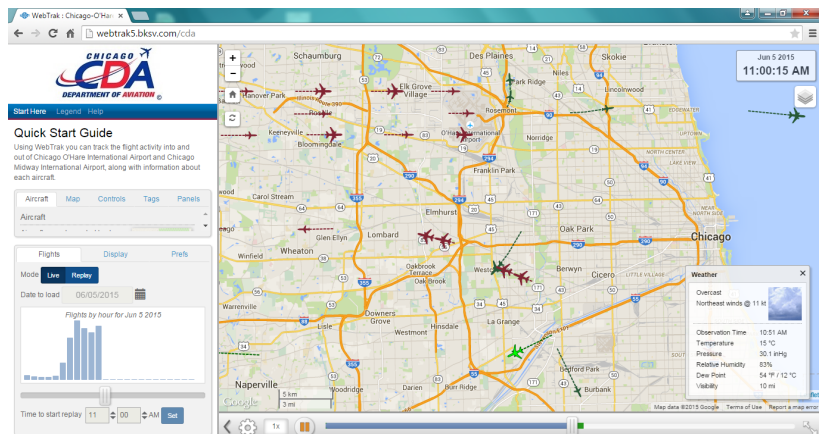
Village Council Meeting - The Village Council meeting will be held on **June 16 at 7:00 p.m. in the Council Chambers** at Village Hall.

Upcoming Proclamation - June 14 - Flag Day

Hydrant Painting to Begin Monday - On Monday, June 8, the Village's hydrant painting contractor (DMD Consultants) is expected to begin work. This work is highly weather dependent and is planned to take place south of 59th Street and west of Main Street over a period of several weeks. Fire hydrants are initially sand blasted to bare metal and covered with a white prime coat of paint the same day. Shortly thereafter, the hydrants will be painted yellow. This year's contract includes painting 665 of the Village's 2,776 fire hydrants. Maintaining their protective coating helps the fire hydrants last longer, improves operability, and make them more aesthetically appealing.

O'Hare Noise Commission - After hearing resident concerns about an increase in airplane noise in 2013, the Village joined the O'Hare Noise Compatibility Commission. At this month's meeting, the Chicago Department of Aviation introduced a Flight Tracker system on its website that allows the public to see the flight patterns for planes arriving from both O'Hare and Midway. The system, which operates on a 20-minute delay, is

available from the Chicago Department of Aviation website (www.flychicago.com) or directly here: <http://webtrak5.bksv.com/cda>. The flight tracker can help residents understand the frequency and altitude of planes flying over their homes.



Emerald Ash Borer (EAB) Ash Tree Removal Update - The Village is in the process of removing ash trees affected by Emerald Ash Borer. Tree removal activities have focused on ash trees with canopy die-back ratings greater than 50%, those with excessive interior sprouts, those that have not been treated, and those unlikely to improve. Since January 1, 2015, 78 ash trees have been removed. Another 201 ash trees will be marked for removal with red paint on the stems. The attached map shows where significant clusters of up to 25 ash trees will be removed (streets shown in red; excluding tollways). In some locations, every parkway tree has an ash tree needing removal.

Staff expects to have the highlighted ash tree clusters marked red for removal in the next two weeks with actual removals to occur as soon as practical. This includes Main Street north of Ogden, where staff is coordinating activities with DuPage County's road work (the Village planted ash trees on County Roads in the 1970s). In all areas, the adjacent property owners are notified of the tree removal and offered tree species choices for replanting when space allows.

In order to limit the number of ash removals, the Village will continue with EAB preventive treatments. A combination of different products and application methods including soil drenches and stem injections are being used. While treatments have prolonged the life of a significant number of ash trees, not all treated ash trees will survive.

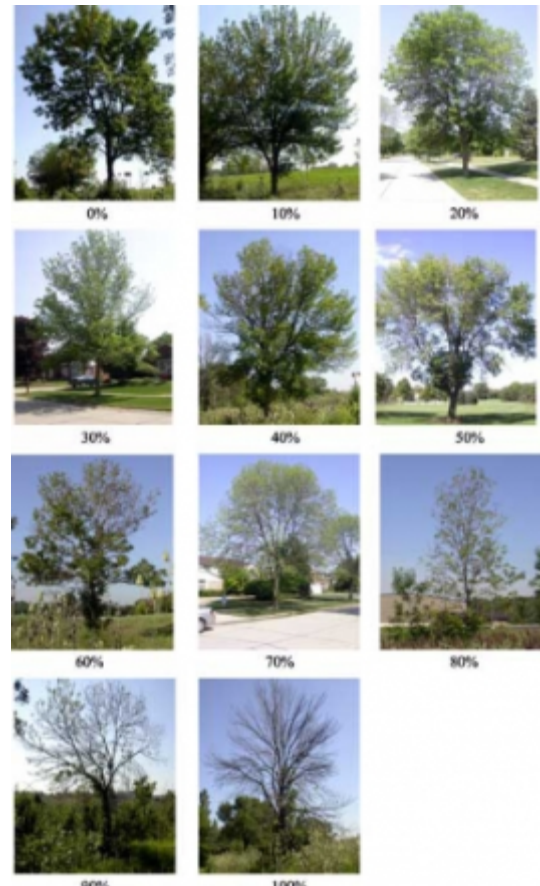
Based on early observations of canopy foliage or lack thereof, EAB has substantially increased in 2015. Various factors have contributed to ash decline. This includes weather conditions such as drought and extreme temperatures of previous years. Pressure from the prevalence of EAB throughout all of the Chicago area may also have overtaken weaker trees regardless of treatment. Notable EAB infestations and canopy die-back can be seen in ash trees that have not been treated, those that have only been treated for a couple of years, and those in stressful situations (narrow parkways, near high speed traffic, or those surrounded by significant concrete).

Replanting has included a diverse group of tree species. Currently, replacement plantings are scheduled for fall 2015 or spring 2016, subject to nursery supply availability. For both a typical fall and spring, staff has been able to honor requests: 45% or more of the plantings are tree species chosen by the resident.

Projected Work Plan:

Staff anticipates the following plan and course of action:

- Continue treating parkway ash trees with ratings of 0 to 30; currently 1,808 trees.
- Re-evaluate trees with moderate EAB, and ratings of 40 to 60 to see if continued treatment is warranted; currently 659 trees
- Re-evaluate trees with significant EAB and ratings of 70 to 100 to determine removal needs; currently 205 trees



Dieback Rating Example

- Remove designated ash trees including clusters; currently 201 trees.
- Continue timely removal of ash trees as they are marked throughout summer and fall.
- Replant as many replacement trees as practical, and honor resident tree species request.
- Continue to survey and update the ash tree inventory throughout the summer.
- Track 2015 budget and contracts, and determine future budget needs.
- Prepare an updated report in August.

