

VILLAGE OF DOWNERS GROVE
Report for the Village
4/12/2022

SUBJECT:	SUBMITTED BY:
Blodgett Sidewalk Design Alternatives	Andy Sikich Public Works Director

SYNOPSIS

A motion is requested to proceed with the final design of the construction of a sidewalk on Blodgett Ave. from 59th St. to 61st St.

STRATEGIC PLAN ALIGNMENT

The goals for 2021-2023 include *Steward of Financial and Environmental Sustainability* and *Top Quality Infrastructure*.

FISCAL IMPACT

The FY22 budget includes \$200,000 for construction of this project.

RECOMMENDATION

Staff recommends approval on the April 19, 2022 active agenda.

BACKGROUND

In 2021, the Village Council approved a four-year plan for the construction of sidewalks near District 58 schools. The plan calls for five sidewalk segments near four different school campuses. These segments will be considered as stand-alone projects over a four year period (2021-2024) and further evaluated for specific neighborhood trade-offs, such as tree removal, retaining walls, and drainage improvements. Each of these sidewalk segments are being proposed on streets where a sidewalk has been previously constructed on the opposite side of the street. As a result, in most cases there are significant neighborhood trade-offs to be considered at each location.

The first segment constructed under this plan was in the Kingsley School neighborhood, along the south side of Norfolk Street. This was constructed in 2021.

The next segment to be considered under this plan is adjacent to Fairmount School and O'Neill Middle School. The proposed sidewalk would be on the east side of Blodgett Ave. from 59th St. to 61st St. This section of Blodgett has curb & gutter, is approximately 1,300' long, and contains 20 trees.

Staff is proposing that this sidewalk be constructed in the standard location, which would place the sidewalk 1' inside the right-of-way line. This is the typical location for a sidewalk, and is the location that was selected by the Village Council for the sidewalk constructed on Norfolk Street in 2021. The primary neighborhood

trade-off associated with this project would be the removal of several parkway trees. Staff anticipates that between 3 and 8 of the 20 trees would need to be removed. A more exact number of parkway trees required to be removed would be refined during final design of the project. Then, if it is determined that any additional parkway trees can be saved or relocated during construction, staff will make every effort to do so. It is anticipated that this project would have little or no impact on the existing drainage system, and would not likely require easements on any private property. Staff is anticipating that the sidewalk will need to be meandered in the right-of-way to avoid one large tree that is partially on private property. Some minor retaining walls may be required within the right-of-way, however the extent of this would need to be determined during final design. The estimated construction cost is approximately \$190,000, which would also need to be confirmed upon the completion of final design. Staff is anticipating designing this project with in-house engineers, so the design cost will be minimal.

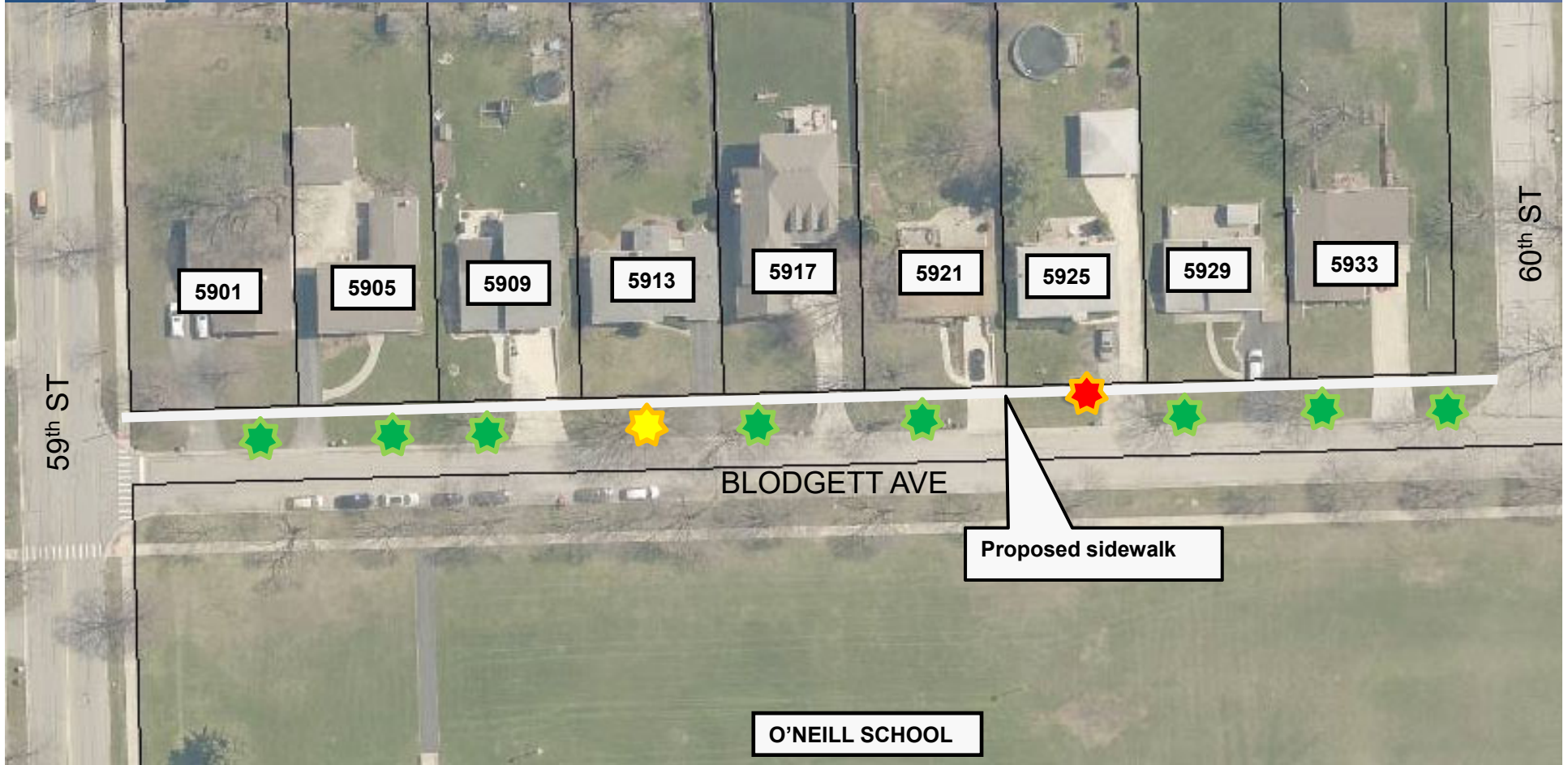
Prior to the completion of final design and bidding, staff will hold a neighborhood meeting to receive feedback from the residents, and to the extent practicable would attempt to incorporate that feedback into the final design.


If directed by Village Council, staff will schedule the neighborhood meeting, complete the final design of the project, and will obtain bids for construction. The lowest responsive bid will then be presented to the Village Council for final approval. It is anticipated that the construction contract will be presented to the Village Council for approval in June 2022, with construction to occur in the summer/early fall.

ATTACHMENTS

Concept Plans


Parkway Tree Impacts



 = Exist. tree to remain

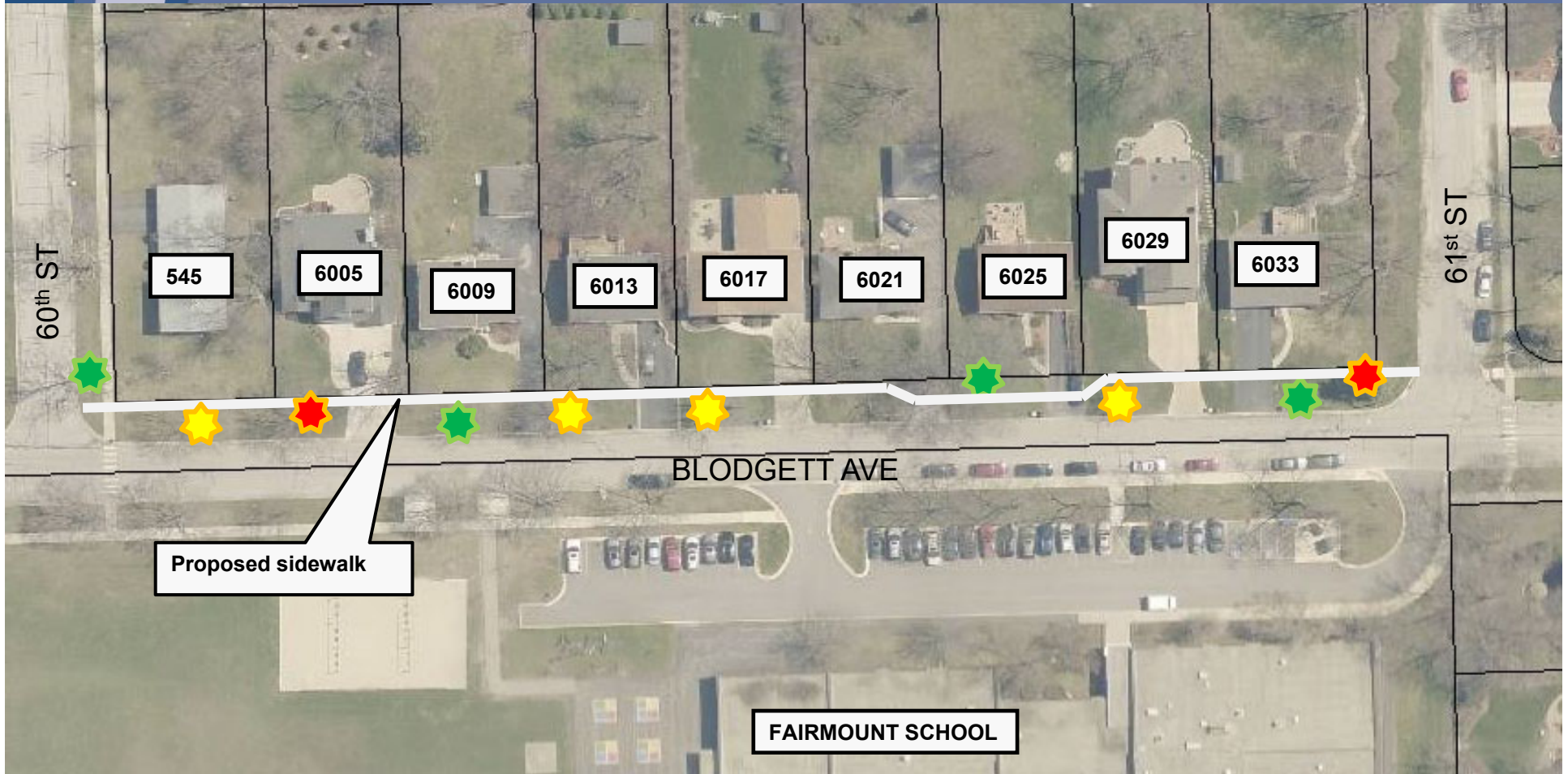
 = Exist. Tree to be removed

****Replacement tree locations to be determined during design****

 = Exist. Tree to be potentially removed

*Locations are shown graphically and are approximate. Exact locations subject to change based on actual field conditions


Parkway Tree Impacts



Proposed sidewalk


FAIRMOUNT SCHOOL



 = Exist. tree to remain

 = Exist. Tree to be removed

****Replacement tree locations to be determined during design****

 = Exist. Tree to be potentially removed

*Locations are shown graphically and are approximate. Exact locations subject to change based on actual field conditions