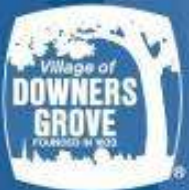
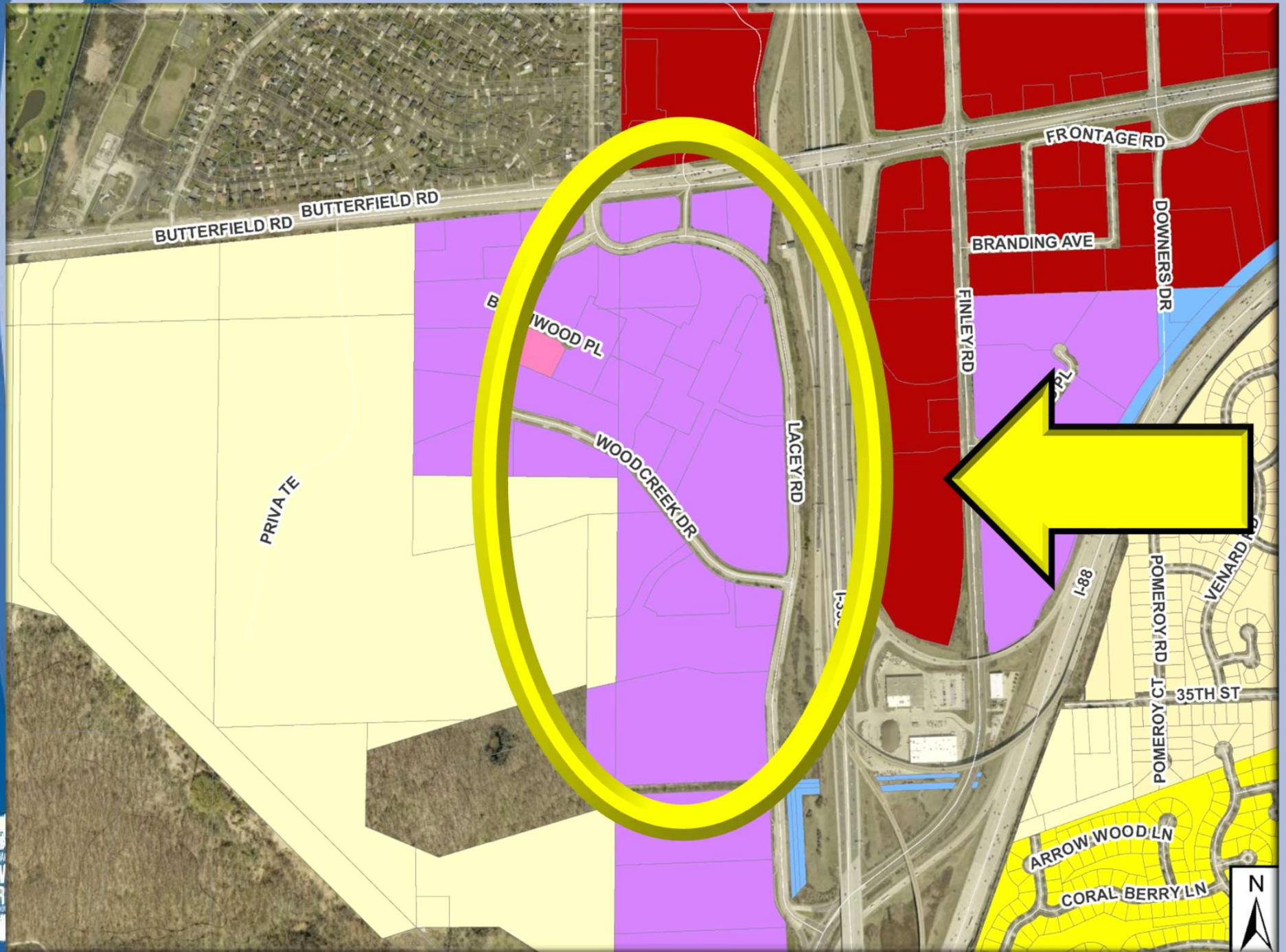


Planned Unit Development Amendment

Esplanade at Locust Point



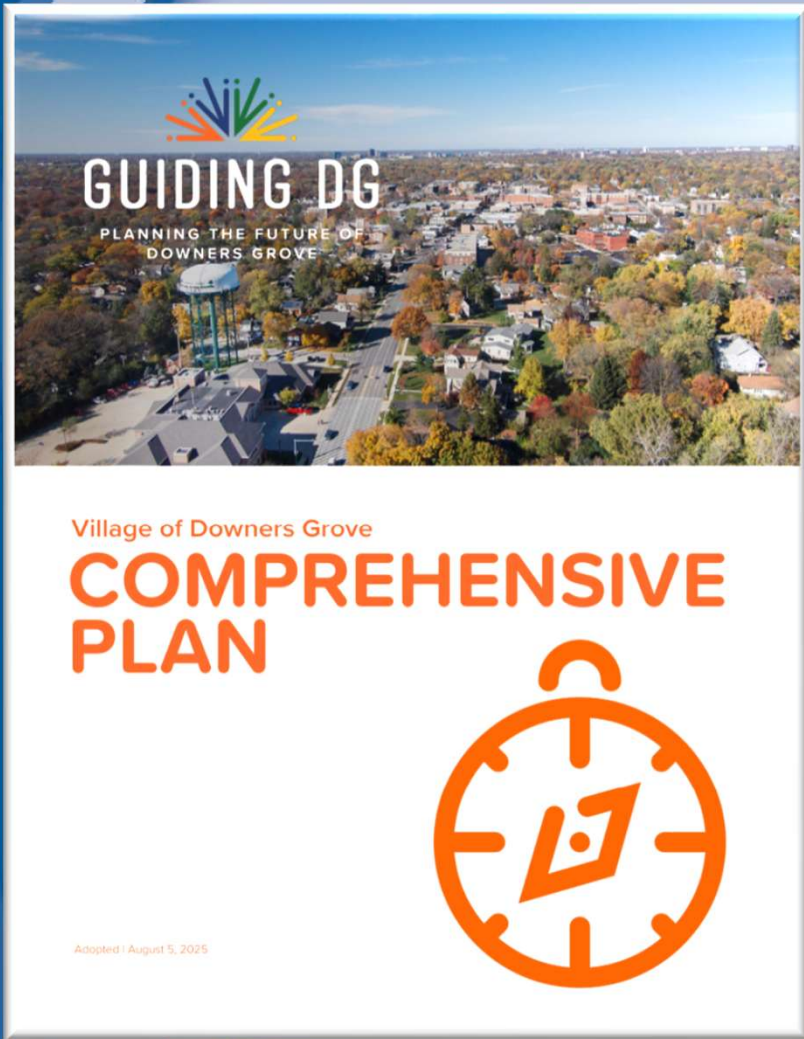
Esplanade



Esplanade



Esplanade



- **Continue partnerships with local healthcare providers**
- **Commercial uses with a regional draw**
- **Ensure the Butterfield Road corridor is resilient to changing market conditions**
- **Maintain quality of life**



Esplanade

Chapter 28

Zoning Ordinance

- **Planned Unit Development Standards**
 - **Section 28.12.040.C.6**

